

board options

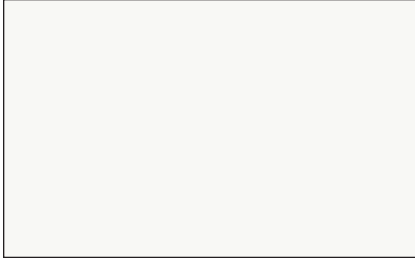
reference guide



MOORECO™

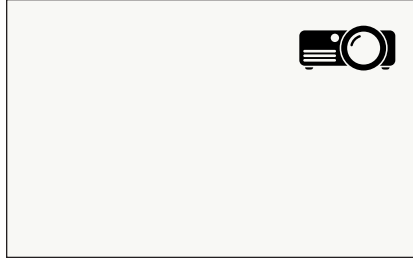
Surface Materials:

Writing Surface Options:



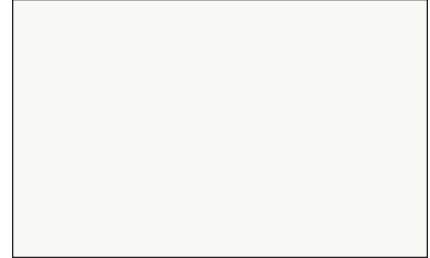
202-25 Porcelain Steel 1/2"

Standard gloss magnetic porcelain steel for superior writability and erasability. Precisely balanced enamel ground coat is furnace-fused to 28- or 24-ga steel. Mounted with a PVA adhesive onto a moisture-resistant substrate with .005" polyester foil backer for 1/2" panel thickness. Class A fire rated. Available with upgraded sheet aluminum backer (203).



202-26* LG Porcelain Steel 1/2"

Low gloss projection magnetic porcelain steel for use **only** as projection surface. Precisely balanced enamel ground coat is furnace-fused to 28- or 24-ga steel. Mounted with a PVA adhesive onto a moisture-resistant substrate with .005" polyester foil backer for 1/2" panel thickness. Class A fire rated. Available with upgraded sheet aluminum backer (203).



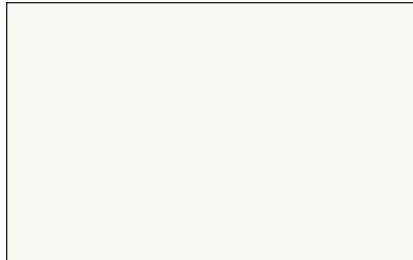
2H2-25 Porcelain Steel 1/4"

More economical and lighter weight standard gloss porcelain steel surface. Precisely balanced enamel ground coat is furnace-fused to 28- or 24-gauge steel. Mounted with a PVA adhesive onto a moisture-resistant substrate with .005" polyester foil backer for a 1/4" panel thickness. Class A fire rated. Available with upgraded sheet aluminum backer (2H3).



2H2-26* LG Porcelain Steel 1/4"

Low gloss projection magnetic porcelain steel for use **only** as projection surface. Precisely balanced enamel ground coat is furnace-fused to 28- or 24-ga steel. Mounted with a PVA adhesive onto a moisture-resistant substrate with .005" polyester foil backer for 1/4" panel thickness. Class A fire rated. Available with upgraded sheet aluminum backer (2H3).



2F2-25 Porcelain Steel NAUF

Porcelain steel surface mounted onto NAUF (no added urea formaldehyde) MDF. Precisely balanced enamel ground coat is furnace-fused to 28- or 24-gauge steel. Includes .005" polyester foil backer for a 1/2" panel thickness. Available with upgraded sheet aluminum backer (2F3). Call for availability.



2F2-26* LG Porcelain Steel NAUF

Low gloss projection magnetic porcelain steel for use **only** as projection surface. Mounted onto NAUF MDF. Precisely balanced enamel ground coat is furnace-fused to 28- or 24-gauge steel. Includes .005" polyester foil backer for a 1/2" panel thickness. Available with upgraded sheet aluminum backer (2F3). Call for availability.



2G5-25 IPB Standard White

Magnetic porcelain steel with a flatness guarantee engineered for use with interactive projectors. Precisely balanced enamel ground coat is furnace-fused to 28- or 24-gauge steel. Mounted with a PVA adhesive onto a moisture-resistant substrate to a galvanized steel backer for a 3/4" panel thickness.



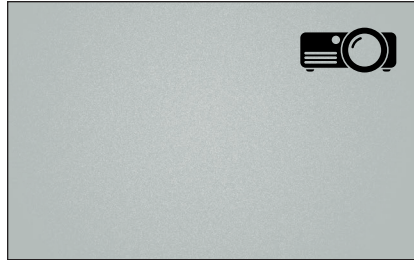
2G5-26* IPB Low Gloss White

Magnetic porcelain steel with a flatness guarantee engineered for use with interactive projectors. Low gloss white for use **only** as projection surface. Requires wet erasing. Enamel ground coat is furnace-fused to 28- or 24-gauge steel. Mounted with a PVA adhesive onto a moisture-resistant substrate to a galvanized steel backer for a 3/4" thick panel.



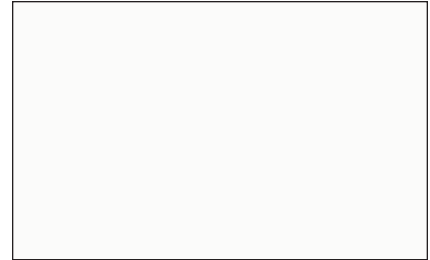
838XX Magnetic Glass

Durable tempered safety glass is permanently mounted to a galvanized steel backer, providing an ultra smooth, easy to clean writing surface that also accepts rare earth magnets. Various mounting options including stainless steel standoffs are available. Available in a variety of colors. Glossy surface is standard. Low iron white available.



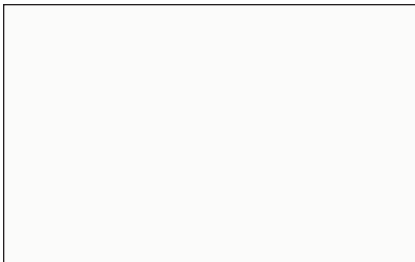
838XX Projection glass

Durable tempered safety glass is permanently mounted to a galvanized steel backer, providing an ultra smooth surface with superior writability and erasability that also accepts rare earth magnets. Matte gray coloration allows use as a projection board.



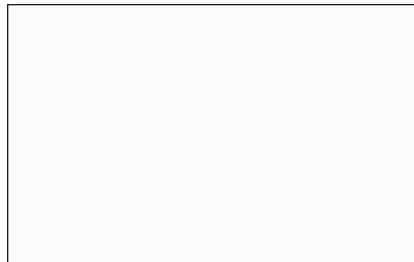
212 Dura-Rite®

High quality dust-free HPL dry erase surface with excellent writability and erasability. Resistant to wear, stains, high temperatures, common household chemical agents and detergents. Taber tests show Dura-Rite® can last up to 125 times as long as melamine boards. White HPL laminated to a moisture resistant substrate for a ¼" panel thickness.



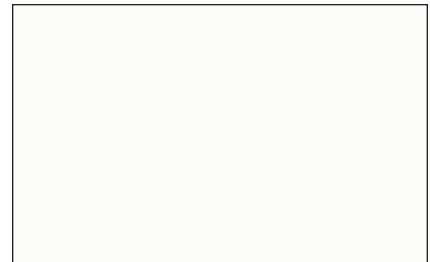
219 Magne-Rite

Magne-Rite is a specially engineered powder coated steel designed for dry erase applications. Glossy white surface provides superior writability and erasability with no ghosting. More economical than other magnetic dry erase surfaces, the steel sheet is permanently adhered to a moisture-resistant substrate for a ¼" panel thickness.



2H1 TuF-Rite™ ¼"

Reformulated TuF-Rite melamine provides a vast improvement over standard economy melamine surfaces. Thermal fuse technology improves erasability to minimize residual marker ghosting and lasts up to three times as long. White melamine is thermal fused to a lightweight substrate for rigidity for a total ¼" panel thickness.



221 TuF-Rite™ ½"

Reformulated TuF-Rite melamine provides a vast improvement over standard economy melamine surfaces. Thermal fuse technology improves erasability to minimize residual marker ghosting and lasts up to three times as long. White melamine is thermal fused to a durable substrate for rigidity for a total ½" panel thickness.

Surface Materials:

Tackboard Surface Options:



301 Valu-Tak Natural Cork

Valu-Tak natural cork surface provides good resiliency and tack-holding ability at an economical price point. The $\frac{1}{8}$ " thick cork layer consists of finely-grained composition cork made with granulated cork and a polyurethane binder. The cork is permanently bonded to a $\frac{3}{8}$ " thick lightweight substrate. Total $\frac{1}{2}$ " panel thickness.



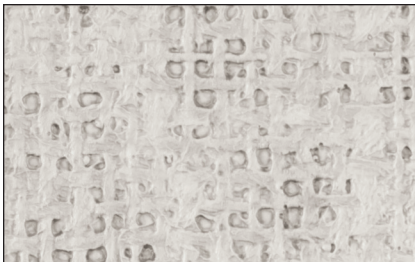
302 Natural Add-Cork

A step up from Valu-Tak, Natural Add-Cork provides excellent resiliency and tack-holding ability. The $\frac{1}{8}$ " thick natural cork layer consists of finely-grained composition cork made with granulated cork and a polyurethane binder. The cork is permanently bonded to a $\frac{3}{8}$ " thick lightweight substrate for a total $\frac{1}{2}$ " panel thickness.



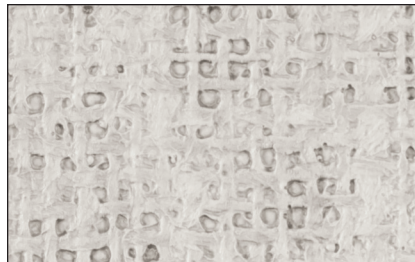
303 Natural Cork-Plate

Our premium cork surface, Natural Cork-Plate provides superior resiliency, durability and tack-holding ability. The $\frac{1}{4}$ " thick natural cork layer consists of finely-grained composition cork made with granulated cork and a polyurethane binder. The cork is permanently bonded to a $\frac{1}{4}$ " thick moisture-resistant substrate for a total $\frac{1}{2}$ " panel thickness.



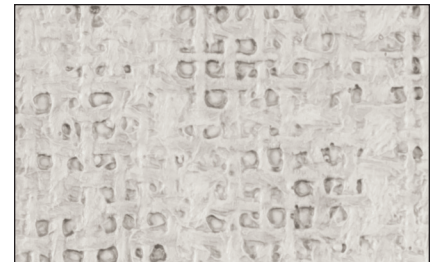
311 Vin-Tak

Economical Vin-Tak boards are made with a durable fabric-backed vinyl permanently adhered to a $\frac{3}{8}$ " thick lightweight substrate for good durability, resilience, and tack-holding ability. Total $\frac{1}{2}$ " panel thickness. The textured vinyl is easy to clean, and is treated to resist the growth of odor- and stain-causing microbes.



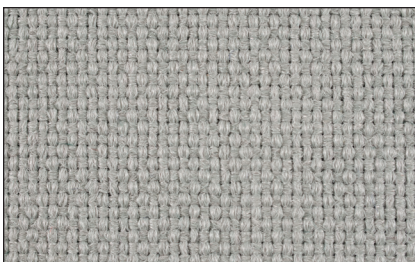
312 Vinyl Add-Cork

Vinyl Add-Cork features a layer of fabric-backed vinyl permanently adhered to Add-Cork: a $\frac{1}{8}$ " thick natural cork layer bonded to a $\frac{3}{8}$ " thick lightweight substrate for a total $\frac{1}{2}$ " panel thickness. Excellent durability, resilience, and tack-holding ability. Vinyl is easy to clean, and is treated to resist the growth of odor- and stain-causing microbes.



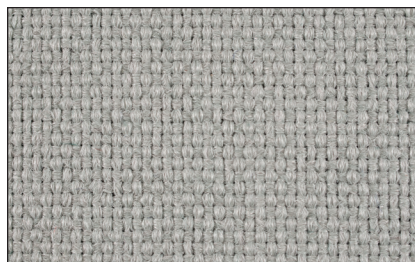
313 Vinyl Cork-Plate

Vinyl Cork-Plate features a layer of fabric-backed vinyl permanently adhered to Cork-Plate: a $\frac{1}{4}$ " thick natural cork layer bonded to a $\frac{1}{4}$ " thick moisture-resistant substrate for a total $\frac{1}{2}$ " panel thickness. Superior durability, resilience, and tack-holding ability. Vinyl is easy to clean, and is treated to resist the growth of odor- and stain-causing microbes.



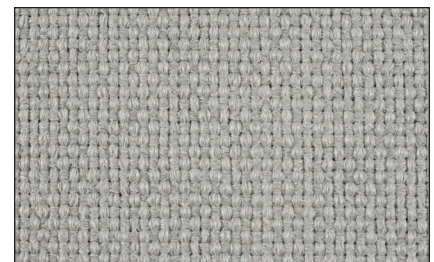
331 Fab-Tak

Economical Fab-Tak boards are made with woven 100% polypropylene. Non-fraying and abrasion-resistant fabric is treated to inhibit the growth of odor- and stain-causing microbes. Fabric is permanently adhered to a $\frac{3}{8}$ " lightweight substrate for good durability, resilience, and tack-holding properties. Total $\frac{1}{2}$ " panel thickness.



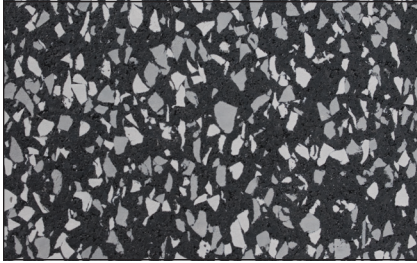
332 Fabric Add-Cork

Fabric Add-Cork features a layer of woven 100% polypropylene fabric permanently adhered to Add-Cork: a $\frac{1}{8}$ " thick natural cork layer bonded to a $\frac{3}{8}$ " thick lightweight substrate for a total $\frac{1}{2}$ " panel thickness. Excellent durability, resilience, and tack-holding properties. Treated to inhibit the growth of odor- and stain-causing microbes.



333 Fabric Cork-Plate

Fabric Add-Cork features a layer of woven 100% polypropylene fabric permanently adhered to Cork-Plate: a $\frac{1}{4}$ " thick natural cork layer bonded to a $\frac{1}{4}$ " thick lightweight substrate for a total $\frac{1}{2}$ " panel thickness. Excellent durability, resilience, and tack-holding properties. Treated to inhibit the growth of odor- and stain-causing microbes.



321 Rubber-Tak

Recycled rubber provides superior self-healing qualities. Rubber-Tak is sound- and shock-absorbent, easy to clean, resists moisture, chemicals, stains, fading, and microbes. Made from a $\frac{1}{16}$ " layer of rubber bonded to a $\frac{7}{16}$ " lightweight substrate for a total $\frac{1}{2}$ " panel. Provides superior durability, resilience, and tack-holding properties.



311-PV Pebbles Vinyl

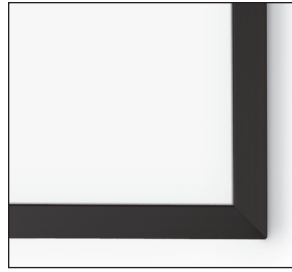
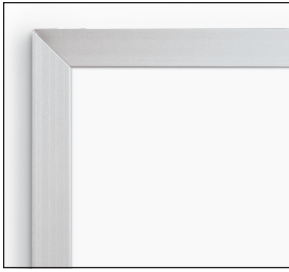
Pebbles Vinyl boards are made with a durable fabric-backed vinyl permanently adhered to a $\frac{7}{16}$ " thick lightweight substrate for good durability, resilience, and tack-holding ability. Total $\frac{1}{2}$ " panel thickness. The textured vinyl is easy to clean, and is treated to resist the growth of odor- and stain-causing microbes.



322 Colored Cork

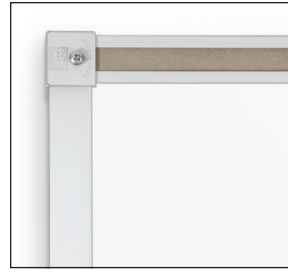
Colored Cork is made with Forbo® linoleum, a combination of oxidized linseed oil, rosin, and finely ground cork. Natural self-sanitizing quality inhibits contaminants. Surface is self-healing and colored throughout. Made with a $\frac{1}{4}$ " thick layer of linoleum permanently bonded to a $\frac{1}{4}$ " moisture-resistant substrate for a $\frac{1}{2}$ " panel thickness.

Board Trims:



A/B Standard Aluminum Trim

Frame any surface with our traditional standard aluminum trim. Straight units of aluminum alloy extrusion with a $\frac{3}{8}$ " profile are joined with hairline miters. Exposed aluminum trim and fasteners are etched and anodized with a dull satin finish in your choice of silver (A) or black (B). Comes standard on tackable surfaces. Writing surfaces will include Deluxe Aluminum Trim unless otherwise specified.



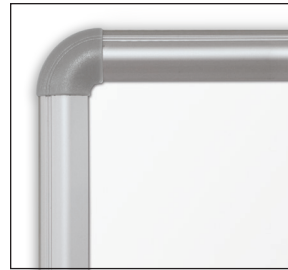
A Deluxe Aluminum Trim

Frame any writing surface with our traditional deluxe aluminum trim. Straight units of aluminum alloy extrusion with a $\frac{3}{8}$ " profile are joined with hairline miters. Exposed aluminum trim and fasteners are etched and clear anodized with a dull satin finish. Includes full-length 1" tack rail with enclosed end stops and a tackable insert. Standard blade tray is 2- $\frac{3}{8}$ " deep and features Dura-Safe® rubber end caps.



N ABC/Slim Trim

Frame any $\frac{1}{4}$ " writing surface with our economical ABC/Slim Trim. Straight units of aluminum alloy extrusion with a $\frac{3}{8}$ " profile are joined with hairline miters. Exposed aluminum trim and fasteners are etched and anodized with a dull satin finish. Top corners are protected with aluminum corner caps. The full length accessory tray is 2" deep (1" deep on boards 3'H x 4'W and smaller) and is finished in plastic end caps to eliminate sharp edges.



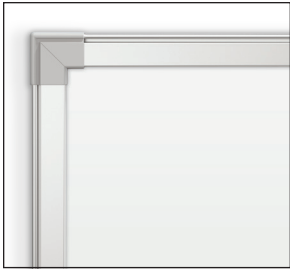
P Presidential Trim

Frame any surface with our stylish Presidential Trim. Extruded anodized aluminum lengths with a rounded 1" profile are joined with injection-molded curved plastic corner pieces. Exposed aluminum trim and fasteners are etched and anodized with a dull satin finish in your choice of clear (silver) or black. Writing surfaces will include matching magnetic accessory tray for markers and erasers.



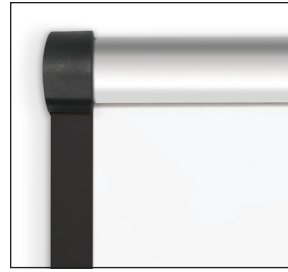
8/9 Ultra Trim

Frame any $\frac{1}{2}$ " surface with our modern and minimalist Ultra Trim. Extruded anodized aluminum lengths with a rounded, ultra slim $\frac{3}{8}$ " profile are joined with minimal plastic corner caps. Exposed aluminum trim and fasteners are etched and anodized with a dull satin finish in your choice of clear (silver) or black. Writing surfaces will include matching magnetic accessory tray for markers and erasers.



K Brio Trim

Brio is a specially engineered trim designed for our Interactive Projector Board series and is not typically available on other surfaces. Straight lengths of aluminum alloy trim with a 3/4" profile are joined with matching plastic corner pieces. Exposed aluminum trim and fasteners are etched and anodized with a dull satin finish. Writing surfaces will include matching magnetic accessory tray for markers and erasers.



O Origin™ Trim

Frame any 1/2" surface with sophisticated Origin™ Trim. Featuring a stylish blend of colors and materials, Origin™ features rounded top and bottom trim in aluminum or solid wood with a 1-1/8" profile. Side trim in black anodized aluminum has a 1/2" profile. Trim is joined with rounded plastic corner caps. Writing surfaces will include matching magnetic accessory tray for markers and erasers.



3 Elan Trim

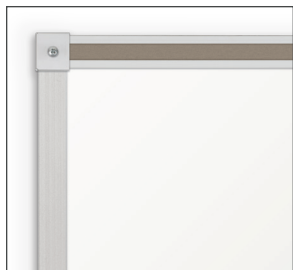
Frame any 1/2" surface with our unique and elegant Elan Trim. Solid oak trim features stylish 1-1/4" beveled profile and is available in either mahogany or medium oak finishes. Trim is joined with satin anodized aluminum corner pieces with a matching bevel to accent the wood. Writing surfaces will include aluminum accessory tray attached to bottom trim.



W Solid Oak Trim

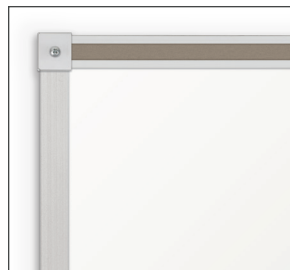
Frame any surface with our traditional solid oak trim. Straight lengths of oak with a 1" profile are joined with a hairline mitered corner for a smooth finish. Oak available in natural or mahogany finish. Trim also available with a deluxe 1-1/2" profile. Call for details. Boards with a writing surface will include a full length oak accessory tray with rounded corners for safety.

Architectural Trims:



A Architectural Trim Package "A"

Trim is constructed from straight lengths of aluminum alloy extrusion with a $\frac{3}{8}$ " profile joined with hairline miters. Exposed aluminum trim and fasteners are etched and anodized with a dull satin finish. Includes full-length 1" tack rail with enclosed end stops and a tackable insert. Includes full-length $2\frac{3}{8}$ " deep blade accessory tray with Dura-Safe® rubber end caps. Same as Deluxe Aluminum.



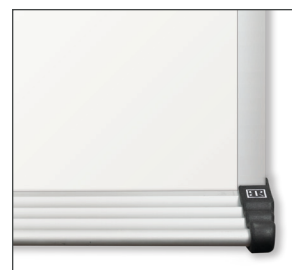
V Architectural Trim Package "V"

Trim is constructed from straight lengths of aluminum alloy extrusion with a $\frac{3}{8}$ " profile joined with hairline miters. Exposed aluminum trim and fasteners are etched and anodized with a dull satin finish. Includes full-length 1" tack rail with enclosed end stops and a tackable insert. Includes full-length enclosed box accessory tray with Dura-Safe® rubber end caps or aluminum tray ends.



Y Architectural Trim Package "Y"

Trim is constructed from straight lengths of aluminum alloy extrusion with a $\frac{3}{8}$ " profile joined with hairline miters. Exposed aluminum trim and fasteners are etched and anodized with a dull satin finish. Includes full-length 2" tack rail with enclosed end stops and a tackable insert. Includes full-length $2\frac{3}{8}$ " deep blade accessory tray with Dura-Safe® rubber end caps.



Z Architectural Trim Package "Z"

Trim is constructed from straight lengths of aluminum alloy extrusion with a $\frac{3}{8}$ " profile joined with hairline miters. Exposed aluminum trim and fasteners are etched and anodized with a dull satin finish. Includes full-length 2" tack rail with enclosed end stops and a tackable insert. Includes full-length enclosed box accessory tray with Dura-Safe® rubber end caps or aluminum tray ends.



5 Architectural Trim Package "5"

Trim is constructed from straight lengths of aluminum alloy extrusion with a $1\frac{1}{8}$ " profile joined with hairline miters. Exposed aluminum trim and fasteners are etched and anodized with a dull satin finish. Includes full-length 2" tack rail with enclosed end stops and a tackable insert. Includes full-length $2\frac{3}{8}$ " deep blade accessory tray with Dura-Safe® rubber end caps.



6 Architectural Trim Package "6"

Trim is constructed from straight lengths of aluminum alloy extrusion with a $1\frac{1}{8}$ " profile joined with hairline miters. Exposed aluminum trim and fasteners are etched and anodized with a dull satin finish. Includes full-length 2" tack rail with enclosed end stops and a tackable insert. Includes full-length enclosed box accessory tray with Dura-Safe® rubber end caps or aluminum tray ends.



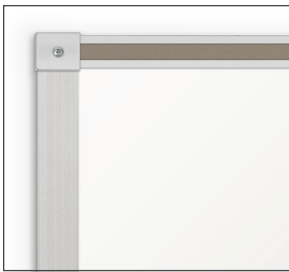
2 Architectural Trim Package "2"

Trim is constructed from straight lengths of aluminum alloy extrusion with a 1-1/2" profile joined with hairline miters. Exposed aluminum trim and fasteners are etched and anodized with a dull satin finish. Includes full-length 2" tack rail with enclosed end stops and a tackable insert. Includes full-length 2-3/8" deep blade accessory tray with Dura-Safe® rubber end caps.



1 Architectural Trim Package "1"

Trim is constructed from straight lengths of aluminum alloy extrusion with a 1-1/2" profile joined with hairline miters. Exposed aluminum trim and fasteners are etched and anodized with a dull satin finish. Includes full-length 2" tack rail with enclosed end stops and a tackable insert. Includes full-length enclosed box accessory tray with Dura-Safe® rubber end caps or aluminum tray ends.



4 Architectural Trim Package "4"

Trim is constructed from straight lengths of aluminum alloy extrusion with a 1-1/2" profile joined with hairline miters. Exposed aluminum trim and fasteners are etched and anodized with a dull satin finish. Includes full-length 1" tack rail with enclosed end stops and a tackable insert. Includes full-length 2-3/8" deep blade accessory tray with Dura-Safe® rubber end caps.

Colors & Finishes:

Trim



Aluminum
Silver



Aluminum
Black



Aluminum
Coffee



Solid Oak
Mahogany



Solid Oak
Medium Oak



Solid Oak
Natural

Porcelain Steel



Off White (25)



Low Gloss Off White
(26)*

Glass



Black



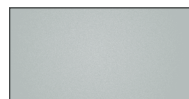
Blue



Green



Low Iron White



Matte Projection Gray



Navy



Orange



Purple



Red



White

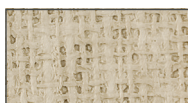


Yellow



Custom Color**

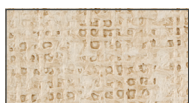
Standard Vinyl



Antique White (45)



Champagne (41)



Cotton (46)



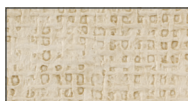
Gray (44)



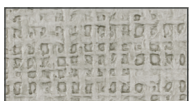
Natural (57)



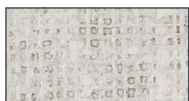
Pacific Blue (47)



Pelican (74)



Platinum (56)



Sterling (77)



Yellow Bouquet (40)

Pebbles Vinyl



Country Stone (70)

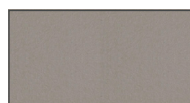


Cream (66)

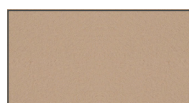


Light Quarry (67)

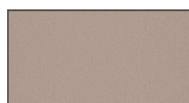
Colored Cork



Ash (07)



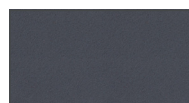
Buff (18)



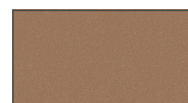
Granite (12)



Slate (19)



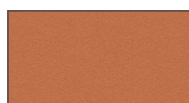
Stone (15)



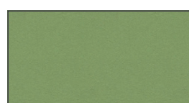
Tan (03)



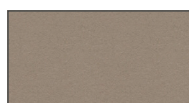
Blueberry**



Cinnamon**



Lettuce**



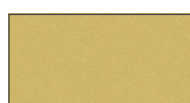
Mushroom**



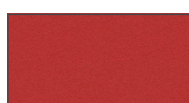
Onyx**



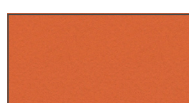
Oyster**



Pineapple**



Salsa**

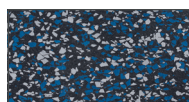


Tangerine**

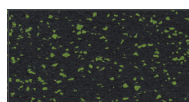
Rubber-Tak®



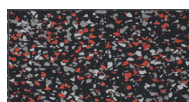
Black (96)



Blue (97)



Green (104)



Red (99)



Tan (95)

Standard Fabric



Granite (36)



Indigo (35)

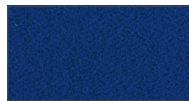


Nutmeg (33)

Hook & Loop



Black (91)



Royal (59)



Silver (61)



MOORECO



VANERUM
NORTH AMERICA

MooreCo | Vanerum North America

2885 Lorraine Avenue | Temple, TX 76501

p: 800.749.2258 | f: 866.888.7483

www.moorecoinc.com | www.vanerumna.com