

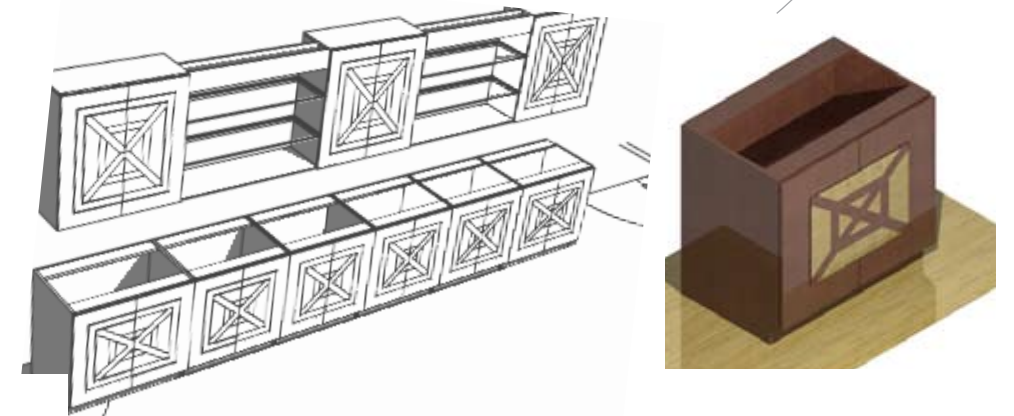


CASE STUDY | Sustainable Bank



Installation of the coffee shop and teller station.

Board room cabinetry uses bamboo inlay on touch-latch doors. See the development from line drawing to finished installation.



Sustainable Bank

designed by Jaymie Rolfe

SITUATION

Situation: A major bank in the southern United States was looking to create a new headquarters. They main focus was sustainability, and they needed furniture for the boardrooms, billiard rooms, kitchens, bathrooms and teller areas. Because most of the furniture would be built-in modular case work, they were also in need of installation assistance.

SOLUTION

The Studio design team from Vanerum created an entirely sustainable solution. The foundation of the caseworks products were built with Skyblend Formaldehyde-Free particleboard cores, and Greenguard Certified laminate edges and surfaces. Warm accents of inlay bamboo and cherry veneer were applied to create a traditional look, representative of the banks brand and image.

RESULT

The product install was nearly flawless. The client is extremely happy with the products, and they were able to open the new facility on time and on schedule.

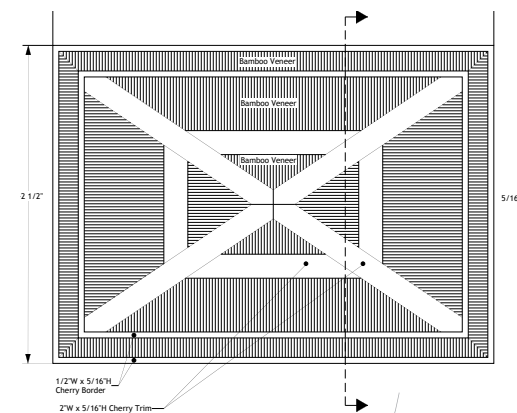
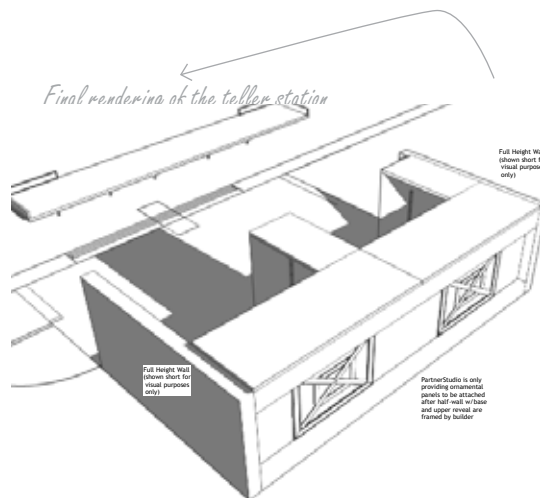
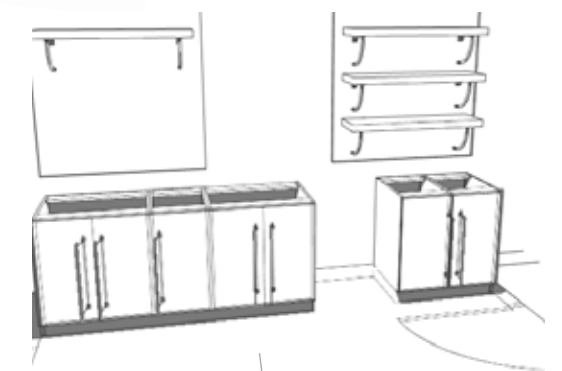


Diagram of bamboo inlay used on the teller station and in the board room.



Ice Cream shop rendering; the ice cream shop is seen on the left side of the photo.

