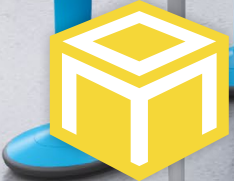




# QuickShip

2026



MOORECO®



[moorecoinc.com/quickship](https://moorecoinc.com/quickship)



MOORECO™

2885 Lorraine Avenue | Temple, TX 76501  
p: 800.749.2258 | f: 866.888.7483

©2026 MooreCo, Inc. All rights reserved. MooreCo reserves the right to correct pricing and/or copy errors. Due to the current volatility in the price of raw and finished materials, please refer to our latest online price guides for pricing and shipping information.



*Consciously designed  
educational furnishings,  
most available to ship in  
5 days or less*

MooreCo's Thrive Philosophy embraces the importance of flexibility and collaboration in any learning environment. Our new QuickShip program has been carefully curated to offer a variety of products that truly accommodate the needs of students and teachers, no matter the age or learning style.

Considering the six key aspects of human development, our QuickShip program creates consciously designed environments with most products shipping in 5 days or less.



[moorecoinc.com/thrive](https://moorecoinc.com/thrive)

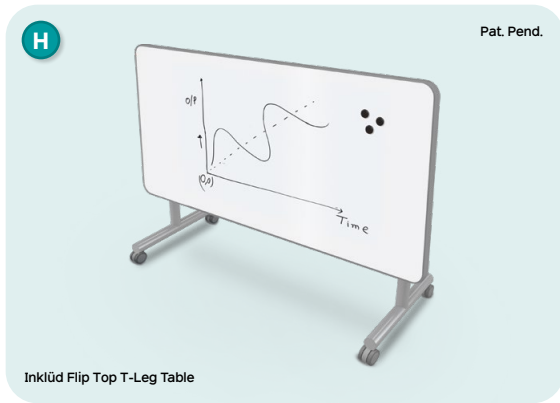
# Desks & Tables: Porcela



Scan for more benefits of Porcela porcelain steel tops!

- Porcelain steel whiteboard provides space for doodling, jotting down notes and ideas, and brainstorming. Surface accepts magnets for even more versatility.
- Porcelain steel reduces ambient reflection and glare over standard HPL markerboard, providing a more comfortable writing surface. Porcelain steel also has superior erasability and comes with a lifetime guarantee.
- Tests show our 24-gauge porcelain steel is more than twice as hard, and twice as scratch-resistant as laminate, reducing dents, dings, and other damage. Surface is also 5.5 times more wear-resistant than laminate.
- Erasability is more than twice as good on a porcelain steel surface versus laminate dry erase surface and holds up to use, showing better erasability over time.
- Porcelain steel resists delamination, keeping dry erasability intact for the life of the desk.
- Porcelain steel tops come with molded polypropylene edge banding in charcoal. Edge is slightly raised for a fully encapsulated top, ensuring no sharp edges are exposed and steel will not rust. Patent pending.

Part No.	Description	Dimensions
<b>A. Hierarchy Beam Desk + Porcelain Steel Top</b>		
59077-66692-PORC-CHAR	Platinum Legs (Standard)	18" - 29"H x 34.4"W x 23.9"D
59077-66692K-PORC-CHAR	Platinum Legs (Youth)	12" - 18"H x 34.4"W x 23.9"D
<b>B. Hierarchy Creator Rectangle Desk + Porcelain Steel Top</b>		
70529	Platinum Legs (Standard)	18" - 29"H x 32.1"W x 21.4"D
70529K	Platinum Legs (Youth)	12" - 18"H x 32.1"W x 21.4"D
<b>C. Hierarchy Rectangle Desk (2620) + Porcelain Steel Top</b>		
59078-66692-PORC-CHAR	Platinum Legs (Standard)	18" - 29"H x 26"W x 20"D
59078-66692K-PORC-CHAR	Platinum Legs (Youth)	12" - 18"H x 26"W x 20"D
<b>D. Hierarchy Shapes Desk + Porcelain Steel Top</b>		
70523	Platinum Legs (Standard)	18" - 29"H x 29.9"W x 28.4"D
70523K	Platinum Legs (Youth)	12" - 18"H x 29.9"W x 28.4"D
<b>E. Hierarchy Activity Kidney Table + Porcelain Steel Top</b>		
59079-66692-PORC-CHAR	Platinum Legs (Standard)	18" - 29"H x 72"W x 48"D
59079-66692K-PORC-CHAR	Platinum Legs (Youth)	12" - 18"H x 72"W x 48"D
<b>F. Hierarchy Activity Rectangle Table + Porcelain Steel Top</b>		
70525	Platinum Legs (Standard)	18" - 29"H x 60"W x 30"D
70525K	Platinum Legs (Youth)	12" - 18"H x 60"W x 30"D
<b>G. Hierarchy Creator Rectangle Table + Porcelain Steel Top</b>		
70527	Platinum Legs (Standard)	18" - 29"H x 57.9"W x 30.8"D
70527K	Platinum Legs (Youth)	12" - 18"H x 57.9"W x 30.8"D
<b>H. Inklüd Table + Porcelain Steel Top</b>		
IN1T1FOADJPORCCHAR	29"H Flip Top T-Leg / Casters	29"H x 60"W x 30"D
IN1T1SOADJPORCCHAR	29"H Fixed Height T-Leg / Casters	29"H x 60"W x 30"D



# Desks: Laminate

## Desks in 5 Days or Less!

Bring style and substance to your classroom in no time with our packed line of QuickShip desks. Featuring five models in three different finishes, our line is designed to give you maximum impact with minimal lead times. Each option comes with matching edge band, providing elevated style, allowing you to create educational spaces that will enhance and encourage learning.

- **Hierarchy Desks:** Available in standard or youth heights, with platinum legs, Hierarchy desks offer configurability for custom layouts, designed to accommodate left- and right-handed users.
- **Avid Single Pedestal Desk:** Designed for the instructor with a generous top and convenient storage, the Avid desk system makes creating your ideal workspace a breeze. Platinum base adds style to any space with a pedestal with drawer and box storage, providing a place to keep files and supplies.



Grey Elm + Matching Edge



Fusion Maple + Matching Edge

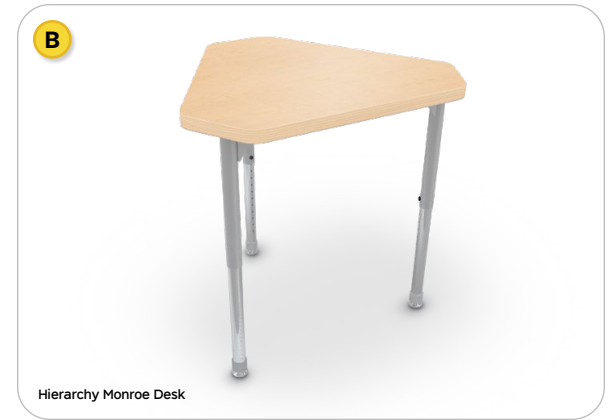


Neutral Weft + Matching Edge

Part No.	Description	Dimensions
<b>A. Hierarchy Creator Rectangle Desk</b>		
1643H8201-8201	Grey Elm + Matching Edge (Standard)	18" - 29"H x 32.1"W x 21.4"D
1643H7909-7909	Fusion Maple + Matching Edge (Standard)	18" - 29"H x 32.1"W x 21.4"D
1643H5875-5875	Neutral Weft + Matching Edge (Standard)	18" - 29"H x 32.1"W x 21.4"D
1663H8201-8201	Grey Elm + Matching Edge (Youth)	12" - 18"H x 32.1"W x 21.4"D
1663H7909-7909	Fusion Maple + Matching Edge (Youth)	12" - 18"H x 32.1"W x 21.4"D
1663H5875-5875	Neutral Weft + Matching Edge (Youth)	12" - 18"H x 32.1"W x 21.4"D
<b>B. Hierarchy Monroe Desk (Small)</b>		
1743K8201-8201	Grey Elm + Matching Edge (Standard)	18" - 29"H x 29.7"W x 26.6"D
1743K7909-7909	Fusion Maple + Matching Edge (Standard)	18" - 29"H x 29.7"W x 26.6"D
1743K5875-5875	Neutral Weft + Matching Edge (Standard)	18" - 29"H x 29.7"W x 26.6"D
1763K8201-8201	Grey Elm + Matching Edge (Youth)	12" - 18"H x 29.7"W x 26.6"D
1763K7909-7909	Fusion Maple + Matching Edge (Youth)	12" - 18"H x 29.7"W x 26.6"D
1763K5875-5875	Neutral Weft + Matching Edge (Youth)	12" - 18"H x 29.7"W x 26.6"D
<b>C. Hierarchy Rectangle Desk (2920)</b>		
104318201-8201	Grey Elm + Matching Edge (Standard)	18" - 29"H x 29"W x 20"D
104317909-7909	Fusion Maple + Matching Edge (Standard)	18" - 29"H x 29"W x 20"D
104315875-5875	Neutral Weft + Matching Edge (Standard)	18" - 29"H x 29"W x 20"D
106318201-8201	Grey Elm + Matching Edge (Youth)	12" - 18"H x 29"W x 20"D
106317909-7909	Fusion Maple + Matching Edge (Youth)	12" - 18"H x 29"W x 20"D
106315875-5875	Neutral Weft + Matching Edge (Youth)	12" - 18"H x 29"W x 20"D
<b>D. Hierarchy Shapes Desk (Standard)</b>		
114368201-8201	Grey Elm + Matching Edge (Standard)	18" - 29"H x 29.9"W x 28.4"D
114367909-7909	Fusion Maple + Matching Edge (Standard)	18" - 29"H x 29.9"W x 28.4"D
114365875-5875	Neutral Weft + Matching Edge (Standard)	18" - 29"H x 29.9"W x 28.4"D
116368201-8201	Grey Elm + Matching Edge (Youth)	12" - 18"H x 29.9"W x 28.4"D
116367909-7909	Fusion Maple + Matching Edge (Youth)	12" - 18"H x 29.9"W x 28.4"D
116365875-5875	Neutral Weft + Matching Edge (Youth)	12" - 18"H x 29.9"W x 28.4"D
<b>E. Avid Single Pedestal Desk</b>		
91774-8201-8201	Grey Elm + Matching Edge	29.8"H x 60"W x 30"D
91774-7909-7909	Fusion Maple + Matching Edge	29.8"H x 60"W x 30"D
91774-5875-5875	Neutral Weft + Matching Edge	29.8"H x 60"W x 30"D



Hierarchy Creator Rectangle Desk



Hierarchy Monroe Desk



Hierarchy Rectangle Desk

D



Hierarchy Shapes Desk

E



Avid Single Pedestal Desk



	Simple/ Indefinite	Continuous/ Progressive	Perfect	Perfect Continuous
Present	I play	I am playing	I have played	I have been playing
Past	I played	I was playing	I had played	I had been playing
Future	I will play	I will be playing	I will have played	I will have been playing

Desks: Lamininate

# Tables: Laminate

## Tables in 5 Days or Less!

Group learning and sharing is yours in no time with our robust line of QuickShip tables. Featuring five models in three different finishes, our line is designed to give you maximum impact with minimal lead times. Each option comes with matching edge band, providing elevated style, allowing you to create educational spaces that will enhance and encourage learning.

- **Hierarchy Tables:** Available in standard or youth heights, with platinum legs, Hierarchy tables offer configurability for custom layouts, designed for activities and groups of all sizes.
- **Inklüd™ Tables:** Inspire and involve with Inklüd! This deceptively simple family of training and collaborative tables features a tubular platinum base with superior mechanics, elevating any environment with a sleek and modern profile.



Grey Elm + Matching Edge



Fusion Maple + Matching Edge



Neutral Weft + Matching Edge



Hierarchy Activity Kidney Table



Hierarchy Activity Rectangle Table



Hierarchy Creator Rectangle Table

Part No.	Description	Dimensions
<b>A. Hierarchy Activity Kidney Table</b>		
66682-V-8201-8201	Grey Elm + Matching Edge (Standard)	18" - 29"H x 72"W x 48"D
66682-V-7909-7909	Fusion Maple + Matching Edge (Standard)	18" - 29"H x 72"W x 48"D
66682-V-5875-5875	Neutral Weft + Matching Edge (Standard)	18" - 29"H x 72"W x 48"D
66682K-V-8201-8201	Grey Elm + Matching Edge (Youth)	12" - 18"H x 72"W x 48"D
66682K-V-7909-7909	Fusion Maple + Matching Edge (Youth)	12" - 18"H x 72"W x 48"D
66682K-V-5875-5875	Neutral Weft + Matching Edge (Youth)	12" - 18"H x 72"W x 48"D
<b>B. Hierarchy Activity Rectangle Table</b>		
66682-E-8201-8201	Grey Elm + Matching Edge (Standard)	18" - 29"H x 60"W x 30"D
66682-E-7909-7909	Fusion Maple + Matching Edge (Standard)	18" - 29"H x 60"W x 30"D
66682-E-5875-5875	Neutral Weft + Matching Edge (Standard)	18" - 29"H x 60"W x 30"D
66682K-E-8201-8201	Grey Elm + Matching Edge (Youth)	12" - 18"H x 60"W x 30"D
66682K-E-7909-7909	Fusion Maple + Matching Edge (Youth)	12" - 18"H x 60"W x 30"D
66682K-E-5875-5875	Neutral Weft + Matching Edge (Youth)	12" - 18"H x 60"W x 30"D
<b>C. Hierarchy Creator Rectangle Table</b>		
1643Q8201-8201	Grey Elm + Matching Edge (Standard)	18" - 29"H x 57.9"W x 30.8"D
1643Q7909-7909	Fusion Maple + Matching Edge (Standard)	18" - 29"H x 57.9"W x 30.8"D
1643Q5875-5875	Neutral Weft + Matching Edge (Standard)	18" - 29"H x 57.9"W x 30.8"D
1663Q8201-8201	Grey Elm + Matching Edge (Youth)	12" - 18"H x 57.9"W x 30.8"D
1663Q7909-7909	Fusion Maple + Matching Edge (Youth)	12" - 18"H x 57.9"W x 30.8"D
1663Q5875-5875	Neutral Weft + Matching Edge (Youth)	12" - 18"H x 57.9"W x 30.8"D
<b>D. Inklüd Flip Top T-Leg Table + Casters</b>		
IN1T1F0ADJW82018201	Grey Elm + Matching Edge	29"H x 60"W x 30"D
IN1T1F0ADJW79097909	Fusion Maple + Matching Edge	29"H x 60"W x 30"D
IN1T1F0ADJF58755875	Neutral Weft + Matching Edge	29"H x 60"W x 30"D
<b>E. Inklüd Fixed Height T-Leg Table + Casters</b>		
IN1T1S0ADJW82018201	Grey Elm + Matching Edge	29"H x 60"W x 30"D
IN1T1S0ADJW79097909	Fusion Maple + Matching Edge	29"H x 60"W x 30"D
IN1T1S0ADJF58755875	Neutral Weft + Matching Edge	29"H x 60"W x 30"D

D



Inklüd Flip Top T-Leg Table

E



Inklüd Fixed Height T-Leg Table



# Chairs & Stools

Multiple seating options for all ages and learning styles, in stock to ship to you within five days.

**A. Hierarchy Grow Stool®:** Available in all stock colors, in two sizes for any age student.

**B. Hierarchy Flipz Stool:** Cute and colorful stool features built-in storage and flips from flat to rocking.

**C. Hierarchy 4-Leg Chair:** Designed to fit all ages, in four seat heights and two base finishes.

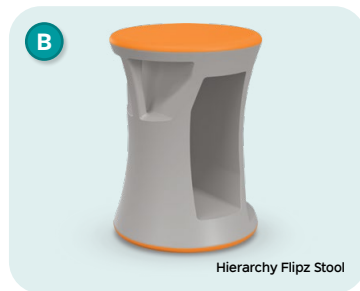
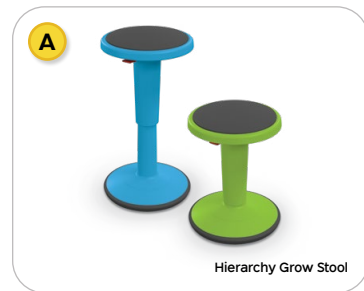
**D. Hierarchy 5-Star Chair:** Easy mobility for instructors or older students, in any color.

**E. Hierarchy Low Back 4-Leg Chair:** Low back version of our standard 4-Leg chair.

**F. Hierarchy Low Back 5-Star Chair:** Low back version of our standard 5-star chair.



Part No.	Description	Dimensions
<b>A. Hierarchy Grow Stool</b>		
50960-XXXX	Short (specify color)	14" - 18"H x 13"W x 13"D
50970-XXXX	Tall (specify color)	17" - 24"H x 13"W x 13"D
<b>B. Hierarchy Flipz Stool</b>		
83464-XXXX	Flipz (specify color)	17.1"H x 12"W x 12"D
<b>C. Hierarchy 4-Leg Chair</b>		
53310-1-XXXX-NA-CH	10" - Chrome (specify color)	22.7"H x 16.7"W x 14.7"D
53312-1-XXXX-NA-CH	12" - Chrome (specify color)	24"H x 16"W x 17"D
53314-1-XXXX-NA-CH	14" - Chrome (specify color)	25.5"H x 17"W x 17.5"D
53316-1-XXXX-NA-CH	16" - Chrome (specify color)	31.8"H x 18.5"W x 20.3"D
53318-1-XXXX-NA-CH	18" - Chrome (specify color)	33.5"H x 18.8"W x 22"D
53310-1-XXXX-NA-PL	10" - Platinum (specify color)	22.7"H x 16.7"W x 14.7"D
53312-1-XXXX-NA-PL	12" - Platinum (specify color)	24"H x 16"W x 17"D
53314-1-XXXX-NA-PL	14" - Platinum (specify color)	25.5"H x 17"W x 17.5"D
53316-1-XXXX-NA-PL	16" - Platinum (specify color)	31.8"H x 18.5"W x 20.3"D
53318-1-XXXX-NA-PL	18" - Platinum (specify color)	33.5"H x 18.8"W x 22"D
<b>D. Hierarchy 5-Star Chair</b>		
53511-XXXX-NA-HC	Hard Caster (specify color)	31" - 36"H x 24"W x 24"D
<b>E. Hierarchy Low Back 4-Leg Chair</b>		
35400-XXXX-PL	16" - Platinum (specify color)	19.5"H x 16.5"W x 17.5"D
35400-XXXX-CH	16" - Chrome (specify color)	19.5"H x 16.5"W x 17.5"D
35401-XXXX-PL	18" - Platinum (specify color)	21.5"H x 20"W x 19"D
35401-XXXX-CH	18" - Chrome (specify color)	21.5"H x 20"W x 19"D
<b>F. Hierarchy Low Back 5-Star Chair</b>		
35404-XXXX-HC	Hard Caster (specify color)	21.5" - 26.5"H x 24"W x 24"D



Low back models QuickShip in Black, Cool Gray, or Navy only



5  
day ship  
or less!



## Tech + AV

Bringing you the best and fastest technology for your classroom, designed to promote sharing, participation, and interactivity.

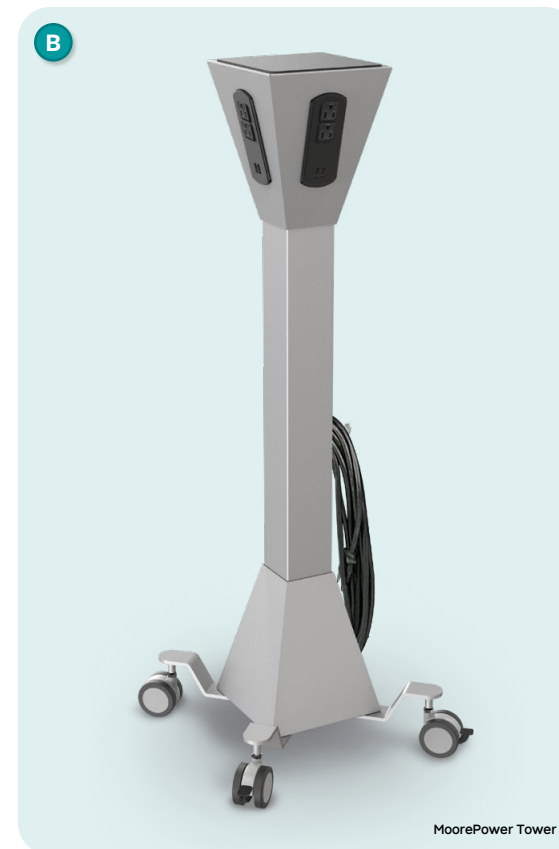
- A. iTeach® Spider Flat Panel Cart:** Choose from either electric adjust or manual adjust models, and get mobility to engage your audience at any time, in any environment.
- B. MoorePower® Tower:** Power your pods and groups with the handy power tower, featuring AC power and USB charging ports. The 13-½' cable provides flexible positioning.



iTeach Spider Electric Adjust



Part No.	Description	Dimensions
<b>A. iTeach Spider Flat Panel Cart</b>		
37675	Electric Adjust	75" - 98"H × 58"W × 30.3"D
37650	Manual Adjust	74"H × 58"W × 30.3"D
<b>B. MoorePower Tower</b>		
27735	MoorePower Tower	40"H × 17.5"W × 17.5"D

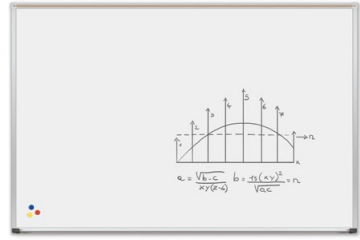


MoorePower Tower

# Visual Communication

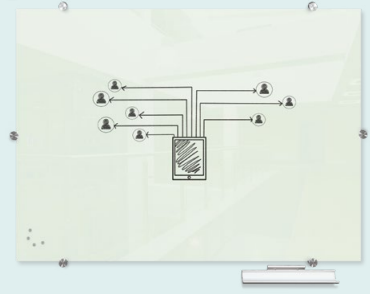


**A**



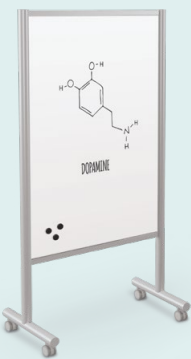
Porcelain Steel Whiteboard + Deluxe Aluminum Trim

**B**



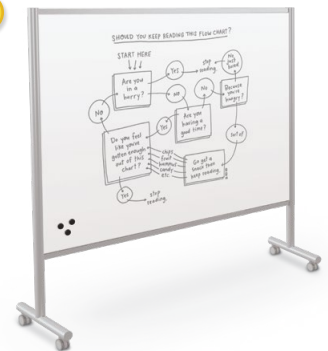
Visionary Glass Board

**E**



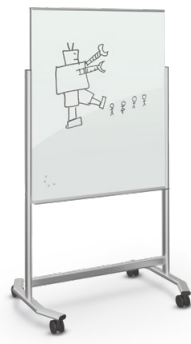
Inkiüd Mobile Whiteboard

**E**



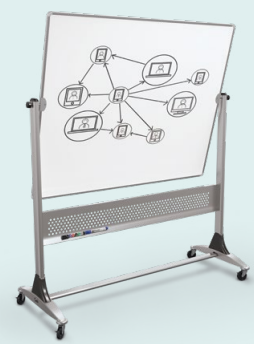
Inkiüd Mobile Whiteboard

**F**

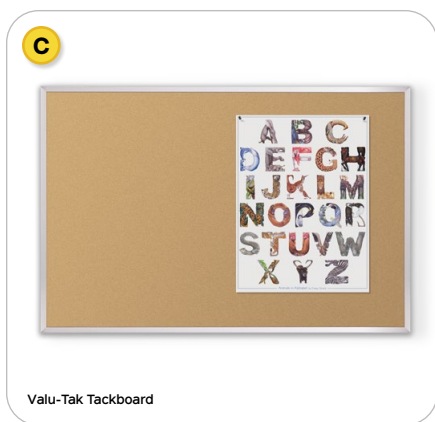


Visionary Move Mobile Board

**G**



Platinum Mobile Reversible Board



Valu-Tak Tackboard



Hierarchy Grow & Roll Board



Inklüd Mobile Whiteboard



Nest Easel

Part No.	Description	Dimensions
<b>A. Porcelain Steel Whiteboard - Deluxe Aluminum Trim</b>		
202AD	Porcelain Steel Whiteboard	4H x 4W
202AG	Porcelain Steel Whiteboard	4H x 6W
202AH	Porcelain Steel Whiteboard	4H x 8W
202AK	Porcelain Steel Whiteboard	4H x 10W
202AM	Porcelain Steel Whiteboard	4H x 12W
202AP	Porcelain Steel Whiteboard	4H x 16W
<b>B. Visionary Magnetic Glass Board</b>		
83843	Visionary Board (Gloss White)	23.6"H x 35.4"W
83844	Visionary Board (Gloss White)	35.4"H x 47.2"W
83841	Visionary Board (Gloss White)	47.2"H x 47.2"W
83845	Visionary Board (Gloss White)	47.2"H x 70.9"W
83846	Visionary Board (Gloss White)	47.2"H x 94.5"W
<b>C. Valu-Tak Natural Cork Tackboard</b>		
301AD	Valu-Tak Board	4H x 4W
301AF	Valu-Tak Board	4H x 5W
301AG	Valu-Tak Board	4H x 6W
301AH	Valu-Tak Board	4H x 8W
<b>D. Hierarchy Grow &amp; Roll Mobile Board</b>		
84425-XXXX	Small (specify color)	47.2"H x 35.4"W x 23.5"D
84426-XXXX	Large (specify color)	70.9"H x 47.2"W x 23.5"D
<b>E. Inklüd Mobile Whiteboard</b>		
59080	Inklüd Mobile Whiteboard 7230	72"H x 30"W x 22"D
59094	Inklüd Mobile Whiteboard 7250	72"H x 50"W x 22"D
59081	Inklüd Mobile Whiteboard 7272	72"H x 72"W x 22"D
<b>F. Visionary Move Mobile Board</b>		
74950-GLOSSWHITE	Small - Gloss White	72.8"H x 38.3"W x 25.9"D
<b>G. Platinum Mobile Reversible Board</b>		
669RG-DD	Porcelain Steel	4H x 6W
669RG-HH	HPL Dry Erase	4H x 6W
<b>H. Nest Easel</b>		
785P	Silver	72"H x 34.8"W x 24"D

## Visual Communication

Visual communication products that promote inclusivity, learning, and sharing, all available to ship within five days.

- A. Porcelain Steel Whiteboard:** Superior porcelain steel board with a full-length accessory tray and tackable map rail.
- B. Visionary® Glass Board:** Modern magnetic glass board features clean erasability with no ghosting.
- C. Valu-Tak Tackboard:** Versatile natural cork surface provides space for artwork, posters, notices, and more.
- D. Hierarchy Grow & Roll Board:** Mobile magnetic glass board brings a variety of colorful options to engage learners.
- E. Inklüd™ Mobile Boards:** Designed to coordinate with the Inklüd Table for a clean and smart appearance, these porcelain steel boards promote mobile learning and sharing. Available in multiple sizes.
- F. Visionary® Move Mobile Board:** Mobile glass magnetic surface that mounts at two heights.
- G. Platinum Mobile Reversible Board:** Full size whiteboard flips 360° and moves easily anywhere it's needed.
- H. Nest Easel:** Compact mobile porcelain steel board with integrated storage box.

# Compass Makerspace Cabinets

- Empowering students to think, create, and do! Our extensive line of modular cabinets leads to fun and discovery. Offering virtually endless configuration options, Compass Cabinets are designed to bring your maker space, classroom, or collaboration maximum activity flexibility with a wide range of storage options, tops, and accessories.
- Available to ship in 10 days or less in our most popular models, providing multiple options for storing supplies, tools, and materials. Side panels and optional handles are available in your choice of Navy, Cool Gray, or Black. Open interiors feature shelves for versatile storage. Standard back version features a platinum metal back panel, with durable casters for easy mobility and configurability.
- **Please note:** QuickShip Compass Cabinets are limited to 20 pieces at a time.



Part No.	Description	Dimensions
<b>A. Compass Mini H1 Cabinet</b>		
A1A1X1D1X0	Standard Back / Standard Side (Black, Cool Gray, Navy) / No Doors / Shelves / Casters	25.9"H × 14.8"W × 19.2"D
A1A1X1D1F0	Standard Back / Standard Side (Black, Cool Gray, Navy) / No Doors / Shelves / Casters / Handles	28.4"H × 14.8"W × 19.2"D
<b>B. Compass Midi H1 Cabinet</b>		
A2A1X1D1X0	Standard Back / Standard Side (Black, Cool Gray, Navy) / No Doors / Shelves / Casters	25.9"H × 28.4"W × 19.2"D
A2A1X1D1F0	Standard Back / Standard Side (Black, Cool Gray, Navy) / No Doors / Shelves / Casters / Handles	28.4"H × 28.4"W × 19.2"D
<b>C. Compass Maxi H1 Cabinet</b>		
A3A1X1D1X0	Standard Back / Standard Side (Black, Cool Gray, Navy) / No Doors / Shelves / Casters	25.9"H × 42"W × 19.2"D
A3A1X1D1F0	Standard Back / Standard Side (Black, Cool Gray, Navy) / No Doors / Shelves / Casters / Handles	28.4"H × 42"W × 19.2"D
<b>D. Compass Mini H2 Cabinet</b>		
B1A1X1D1X0	Standard Back / Standard Side (Black, Cool Gray, Navy) / No Doors / Shelves / Casters	36.1"H × 14.8"W × 19.2"D
B1A1X1D1F0	Standard Back / Standard Side (Black, Cool Gray, Navy) / No Doors / Shelves / Casters / Handles	38.6"H × 14.8"W × 19.2"D
<b>E. Compass Midi H2 Cabinet</b>		
B2A1X1D1X0	Standard Back / Standard Side (Black, Cool Gray, Navy) / No Doors / Shelves / Casters	36.1"H × 28.4"W × 19.2"D
B2A1X1D1F0	Standard Back / Standard Side (Black, Cool Gray, Navy) / No Doors / Shelves / Casters / Handles	38.6"H × 28.4"W × 19.2"D
<b>F. Compass Maxi H2 Cabinet</b>		
B3A1X1D1X0	Standard Back / Standard Side (Black, Cool Gray, Navy) / No Doors / Shelves / Casters	36.1"H × 42"W × 19.2"D
B3A1X1D1F0	Standard Back / Standard Side (Black, Cool Gray, Navy) / No Doors / Shelves / Casters / Handles	38.6"H × 42"W × 19.2"D
<b>G. Compass Mini H3 Cabinet</b>		
C1A1X1D1X0	Standard Back / Standard Side (Black, Cool Gray, Navy) / No Doors / Shelves / Casters	51.1"H × 14.8"W × 19.2"D
C1A1X1D1F0	Standard Back / Standard Side (Black, Cool Gray, Navy) / No Doors / Shelves / Casters / Handles	53.6"H × 14.8"W × 19.2"D
<b>H. Compass Midi H3 Cabinet</b>		
C2A1X1D1X0	Standard Back / Standard Side (Black, Cool Gray, Navy) / No Doors / Shelves / Casters	51.1"H × 28.4"W × 19.2"D
C2A1X1D1F0	Standard Back / Standard Side (Black, Cool Gray, Navy) / No Doors / Shelves / Casters / Handles	53.6"H × 28.4"W × 19.2"D
<b>I. Compass Maxi H3 Cabinet</b>		
C3A1X1D1X0	Standard Back / Standard Side (Black, Cool Gray, Navy) / No Doors / Shelves / Casters	51.1"H × 42"W × 19.2"D
C3A1X1D1F0	Standard Back / Standard Side (Black, Cool Gray, Navy) / No Doors / Shelves / Casters / Handles	53.6"H × 42"W × 19.2"D





Storage & Organization

# Soft Seating & Lounge

Adding soft seating to your spaces adds to a user's sensory experience, improving calmness, focus, and reducing tension. Choose from a variety of ways to affirm positive feelings in your environments, ready to ship within 10 days.

**Please note:** QuickShip soft seating is limited to 20 pieces at a time. Multiple fabric availability will be based on quantity and pieces ordered. Contact us for more details.

- **Dot Rocking Stool (A):** Rocking motion created by a smooth black base allows these cylindrical soft seats to create rhythmic micro-movements that help release excess energy.
- **Soft Seating Seat Pad (B & C):** Available in multiple sizes, full-foam construction seat pads are ideal for use as floor cushions or extra padding on harder seats. Coming soon in sets of five.
- **Dot Cart (D):** Available in four sizes, the Dot Cart is perfect storage for smaller dots or soft seating seat pads.
- **Soft Seating Stools (E-G):** Choose our comfy Pouf with glides, or choose a soft square or round stool with aluminum legs, available in three sizes.
- **Blossom Set (H):** Put a smile on your space with adorable flower soft seating, available in mix and match fabrics.
- **Soft Sway Rocking Chair (I):** In two sizes for adults or kids, the Soft Sway will provide soothing movement and comfort.



Part No.	Description	Dimensions
<b>A. Dot Rocking Stool</b>		
97R105-VX-XXXX	15" - Extra Low	5"H x 15"W x 15"D
97R112-VX-XXXX	15" - Low	12"H x 15"W x 15"D
97R115-VX-XXXX	15" - Medium	15"H x 15"W x 15"D
97R118-VX-XXXX	15" - High	18"H x 15"W x 15"D
96R105-VX-XXXX	18" - Extra Low	5"H x 18"W x 18"D
96R112-VX-XXXX	18" - Low	12"H x 18"W x 18"D
96R115-VX-XXXX	18" - Medium	15"H x 18"W x 18"D
96R118-VX-XXXX	18" - High	18"H x 18"W x 18"D
<b>B. Soft Seating Seat Pad</b>		
115R3-VX-XXXX	Round 15" - Extra Low	3"H x 15"W x 15"D
115R5-VX-XXXX	Round 15" - Low	5"H x 15"W x 15"D
118R3-VX-XXXX	Round 18" - Extra Low	3"H x 18"W x 18"D
118R5-VX-XXXX	Round 18" - Low	5"H x 18"W x 18"D
115R3-VX-XXXX	Square 15" - Extra Low	3"H x 15"W x 15"D
115R5-VX-XXXX	Square 15" - Low	5"H x 15"W x 15"D
118R3-VX-XXXX	Square 18" - Extra Low	3"H x 18"W x 18"D
118R5-VX-XXXX	Square 18" - Low	5"H x 18"W x 18"D
<b>C. Soft Seating Seat Pad 5-Pack</b>		
115R3-5-XXXX	Round (5-Pack)	3"H x 15"W x 15"D
115S3-5-XXXX	Square (5-Pack)	3"H x 15"W x 15"D
<b>D. Dot Cart</b>		
20702	Single (for 15" Dots)	31.8"H x 17"W x 17"D
20703	Double (for 15" Dots)	31.8"H x 33"W x 17"D
20704	Single (for 18" Dots)	31.8"H x 20"W x 20"D
20705	Double (for 18" Dots)	31.8"H x 39"W x 20"D

## QuickShip Fabric Options:



Handy cart holds Dots and Seat Pads for tidy storage!

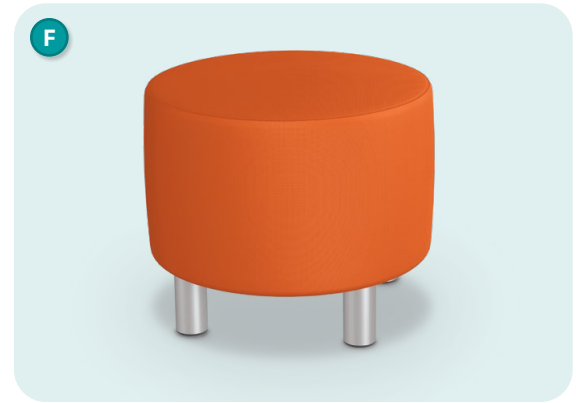
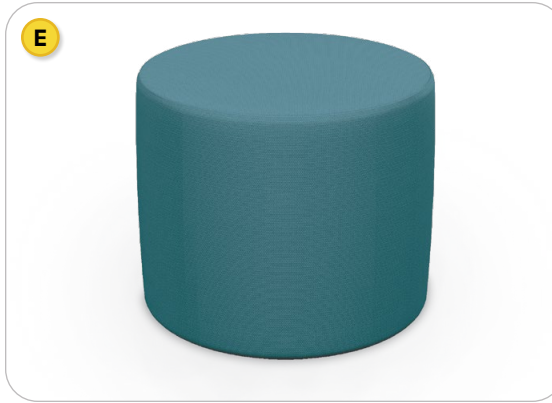


Get seat pads in packs of five!

Available in two sizes!

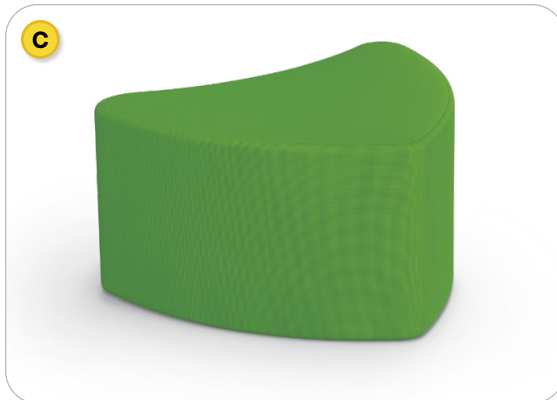
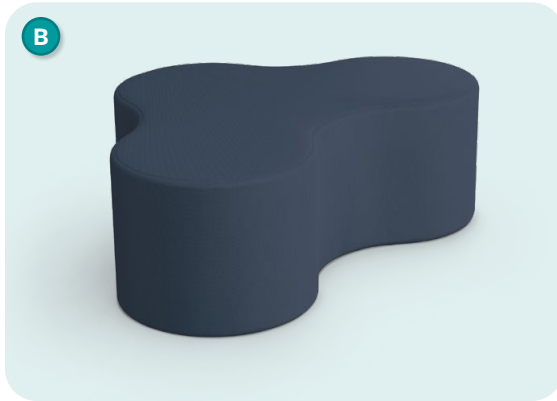
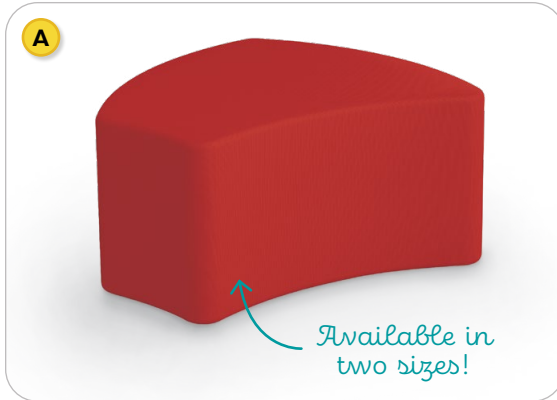
**10**  
day ship  
or less!

Choose any two QuickShip fabric for petals and center!



Part No.	Description	Dimensions
<b>E. Pouf Stool</b>		
970-XXXX	Pouf Stool	18"H x 18"W x 18"D
<b>F. Round Stool</b>		
980L-XXXX	Low	15"H x 18"W x 18"D
980M-XXXX	Medium	20"H x 18"W x 18"D
980H-XXXX	High	24"H x 18"W x 18"D
<b>G. Square Stool</b>		
990L-XXXX	Low	15"H x 18"W x 18"D
990M-XXXX	Medium	20"H x 18"W x 18"D
990H-XXXX	High	24"H x 18"W x 18"D
<b>H. Blossom Set</b>		
BL30-XXXX-S6-XXXX-G	Center + 6 Petals	18"H x 66"W x 60"D
<b>I. Soft Sway Rocking Chair</b>		
1000RC-VX-XXXX	Large	30.5"H x 22.5"W x 29"D
7000RC-VX-XXXX	Small	26"H x 21"W x 26.5"D

# Soft Seating & Lounge

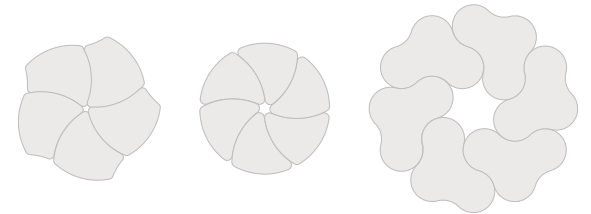


or less!

See all QuickShip fabric options on page 14!

## Soft Seating for Pods + Groups

- Soft seating creates a welcoming and comfortable environment by establishing islands of quiet and calm where creativity, collaboration, and socialization can flow naturally.
- Adding flexible seating to your spaces increases a user's sensory experience, shown to improve calmness, focus, and reduce tension. By creating space where humans of all ages can relax, you foster positive attitudes and encourage learning.
- Choose from Shapes, Kids Shapes, Cloud 9, or Chevron options and add fun, soft, comfortable and interactive seating to your learning environments.



Part No.	Description	Dimensions
<b>A. Shapes Bench</b>		
900S-XXXX	Shapes Bench	18"H x 29"W x 28.5"D
915S-XXXX	Kids Shapes Bench	16"H x 18"W x 20"D
<b>B. Cloud 9 Bench</b>		
1200S-XXXX	Cloud 9	18"H x 48"W x 33.5"D
<b>C. Chevron Bench</b>		
1100S-XXXX	Chevron	18"H x 30"W x 24"D

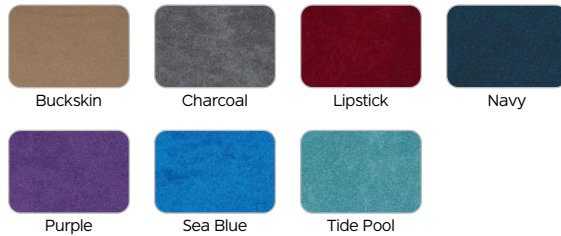
# Beanies by MooreCo

Find a cozy pod to recharge during the day. Featuring the same soft and comfortable interior cushioning used for our highest quality soft seating, these bean bag chairs come in multiple sizes and versions for both indoor and outside settings.

- A. Indoor Beanies:** Indoor styles are upholstered in cozy microsuede. Available in select fabrics and multiple colors to suit any room with style. 100% machine washable dual layer bean bag with removable insert.
- B. Outdoor Beanies:** Outdoor Beanies feature a 100% machine washable exterior made of Sunbrella canvas with a removable insert. Outdoor Beanies are filled with polystyrene infill.

Part No.	Description	Dimensions
<b>A. Indoor Beanies</b>		
58581-VX-XXXX	Lima Lounger (S)	26"H x 46"W x 34"D
58580-VX-XXXX	Lima Lounger (L)	36"H x 64"W x 47"D
58582-VX-XXXX	Lentil Lounger (S)	16"H x 45"W x 45"D
58583-VX-XXXX	Lentil Lounger (L)	40"H x 48"W x 58"D
58584-VX-XXXX	Pinto Pillow	15"H x 44"W x 64"D
<b>B. Outdoor Beanies</b>		
58588-VX-XXXX	Chana Lounge Chair	30"H x 36"W x 28"D
58589-VX-XXXX	Fava Lounge Chair	28"H x 26"W x 36"D
58585-VX-XXXX	Square Ottoman	17"H x 17"W x 17"D
58586-VX-XXXX	Round Ottoman	17"H x 21"W x 21"D
58587-VX-XXXX	Rectangle Ottoman	14"H x 26"W x 18"D

## Indoor Fabric Options:










## Outdoor Fabric Options:





	Simple/ Indefinite	Continuous/ Progressive	Perfect	Perfect Continuous
Present	I play	I am playing	I have played	I have been playing
Past	I played	I was playing	I had played	I had been playing
Future	I will play	I will be playing	I will have played	I will have been playing

## Connect with us...

-  [instagram.com/mooreco\\_inc](https://www.instagram.com/mooreco_inc)
-  [pinterest.com/moorecoinc](https://www.pinterest.com/moorecoinc)
-  [facebook.com/moorecoinc](https://www.facebook.com/moorecoinc)
-  [linkedin.com/company/mooreco-inc](https://www.linkedin.com/company/mooreco-inc)
-  [moorecoinc.bsky.social](https://www.bsky.social/moorecoinc)
-  [youtube.com/moorecoinc](https://www.youtube.com/moorecoinc)
-  [tiktok.com/@moorecoinc](https://www.tiktok.com/@moorecoinc)



[moorecoinc.com/quickship](https://www.moorecoinc.com/quickship)



MooreCo Inc.  
 2885 Lorraine Avenue | Temple, TX 76501  
 p: 800.749.2258 | f: 866.888.7483  
[www.moorecoinc.com](https://www.moorecoinc.com)



703673126021

C090624 M051526