



A MooreCo Render to Reality™ Success Story

Magellan International School: A Forever Home for Transformative Learning

Magellan International School, a forward-thinking independent school in the heart of Austin, Texas, has been a trailblazer in education since opening its doors in 2009. Originally starting as a preschool, Magellan's founding was a community effort with local supporters including MooreCo, who donated furniture when the school first opened. Magellan has grown rapidly and now serves 600 students from preschool through 9th grade.

Once its high school reaches full capacity, Magellan will serve up to 675 students, continuing its mission of fostering globally-minded, innovative learners through International Baccalaureate (IB) programming in a Spanish immersive setting. At that point, Magellan will be one of only a few schools of its kind in the nation.

After outgrowing a series of temporary spaces, Magellan secured and moved into a 14-acre "forever home" campus which opened its doors in the fall of 2023. This began an incredible partnership with MooreCo who helped outfit their expansive new space.

Magellan's rapid development is not just about academic expansion—it is also about creating an environment that nurtures learning in a thoughtful, flexible, and sensory-sensitive way. The design and furnishing of the new campus played a crucial role in this vision, and MooreCo and its Thrive Philosophy helped bring it to life.

Previously, Magellan's facilities were outfitted with a mix of furnishings accumulated over the years to make the best use of temporary spaces. But the long-term goal was always to secure a permanent home where the full vision of an ideal learning environment could flourish. The new Magellan campus presented the perfect opportunity to rethink every aspect of the space to include adaptable, durable, and developmentally conscious furniture.

Magellan's administration focused on creating classrooms and learning areas that catered to students of all ages and abilities. From the start, the design process was guided by a simple but powerful question: "What would a sensory-thoughtful classroom look like?" The team knew they needed furniture

that would support different learning styles, foster independence, and encourage creativity. MooreCo's products—including standing desks, wiggle stools, traditional desks and chairs, and soft seating for quiet moments—were chosen for their adaptability and ability to meet the sensory and developmental needs of students.

The elementary classrooms are accessible and adaptable for the youngest learners, promoting engagement through tactile environments. Learning spaces outside the classroom are also given equal thought. The colorful, energetic media center allows students to explore their academic interests while testing out a variety of setups. Brightly colored, custom shelving encircles mobile [Hierarchy Wavy Rectangle Desks](#) and [Hierarchy Creator Half Round Tables](#) with [Hierarchy 4-Leg Chairs](#). Cozy nooks with [Soft Sway Rockers](#), [Beanies by MooreCo](#), and [Cocoon Benches](#) give students spaces to rest, recharge, and read.

For middle school students, the furniture reflects a growing need for autonomy. Flexible seating options and mobile furniture allow students to create their own learning environments, empowering them to take responsibility for their workspaces and collaborate in small groups. Mobile, configurable pods made of [Hierarchy Wavy Rectangle Desks + Porcelain Steel Tops](#) provide spaces to collaborate, doodle, and share ideas. [Height Adjustable Hierarchy Activity Tables + Porcelain Steel Tops](#) create large work areas for engaging, active learning. [Hierarchy Grow Stools®](#), [Hierarchy Cantilever Chairs](#), [Hierarchy 4-Leg Stools](#), and [Dot Rocking Stools](#) provide a variety of sensory seating. To create a fully mobile, adaptable classroom, [Compass Cabinets](#) and [Avid Modular Desk Systems](#) for teachers were added.

High school spaces are more sophisticated, with raised tables, stools, and soft seating options that reflect the maturity and independence of older students while still catering to their developmental needs. Students prepare for the workforce or higher ed with flex spaces and lounge areas. Modular [Elevate Wind soft seating](#), [MooreCo Frequency Tables](#), and [Dot Rocking Stools](#) let students reinvent spaces for studying, socializing, or collaborating. A lounge outfitted with [Orbit Media Space soft seating](#) and [Cocoon Benches](#) with a table on casters mimics environments Magellan students will encounter after graduation.

Students weren't the only priority when outfitting the new campus. A sleek teachers' lounge in calming blue tones with comfortable [Akt Lounge Seating](#), [Tablet Tables](#), mobile [MooreCo Frequency Tables](#), and stackable [Akt 4-Leg Chairs](#) create an adaptable space that can be reconfigured based on the needs of the teachers.

Throughout the campus, the design emphasizes the importance of flexibility and choice. "We created an environment that would benefit all of our students, give them the opportunity to thrive, and to learn and verbalize what they need for themselves," says Magellan Director of Operations, Whitney Winchester.

Magellan students now have the opportunity to explore which environments and tools help them learn best. MooreCo presented products that are adjustable, durable, and customizable to help them achieve this goal.

Magellan and MooreCo share a commitment to creating spaces that foster engagement, independence, and developmental awareness. "We were looking for furniture we could customize to our needs and the needs of the students. MooreCo was willing to do that for us and walk us through any questions that came up or how to troubleshoot to meet our needs. It really was a merging of two similar philosophies on what a classroom should be," says Ms. Winchester.

When the new campus opened, students, teachers, and parents responded positively. "We've had a lot of positive feedback. The students like to try different seating. The space doesn't seem chaotic. It is a cohesive space where they were able to try things out without being overwhelmed," says Ms. Winchester.

She expands, "Students love the autonomy created by the flex spaces where they can break into small groups with mobile furniture in the room or hallways and have the freedom to work on their own. The students are adjusting the furniture themselves and feel the independence to do that."

Outfitting an entire campus is a huge undertaking and takes patience, teamwork, and endurance. "This level of a delivery and install is significant. 22,000 square feet is a lot of moving parts. MooreCo's flexibility was helpful during high-stress moments. The team was able to work together and there was never a "no, we can't do that" moment," explains Ms. Winchester.

The success of the Magellan campus demonstrates the importance of thoughtful design in educational spaces. With MooreCo's flexible, durable, and adaptable furniture, Magellan created a learning environment that supports student growth, creativity, and independence for years to come. ■

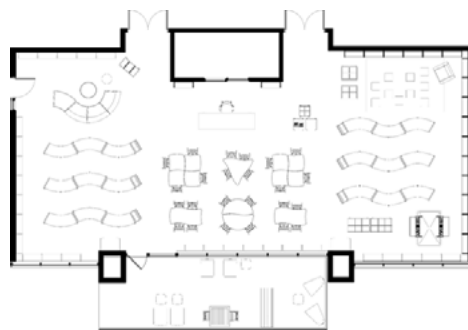
Stay tuned for Phase II of furniture installation, coming in 2025!

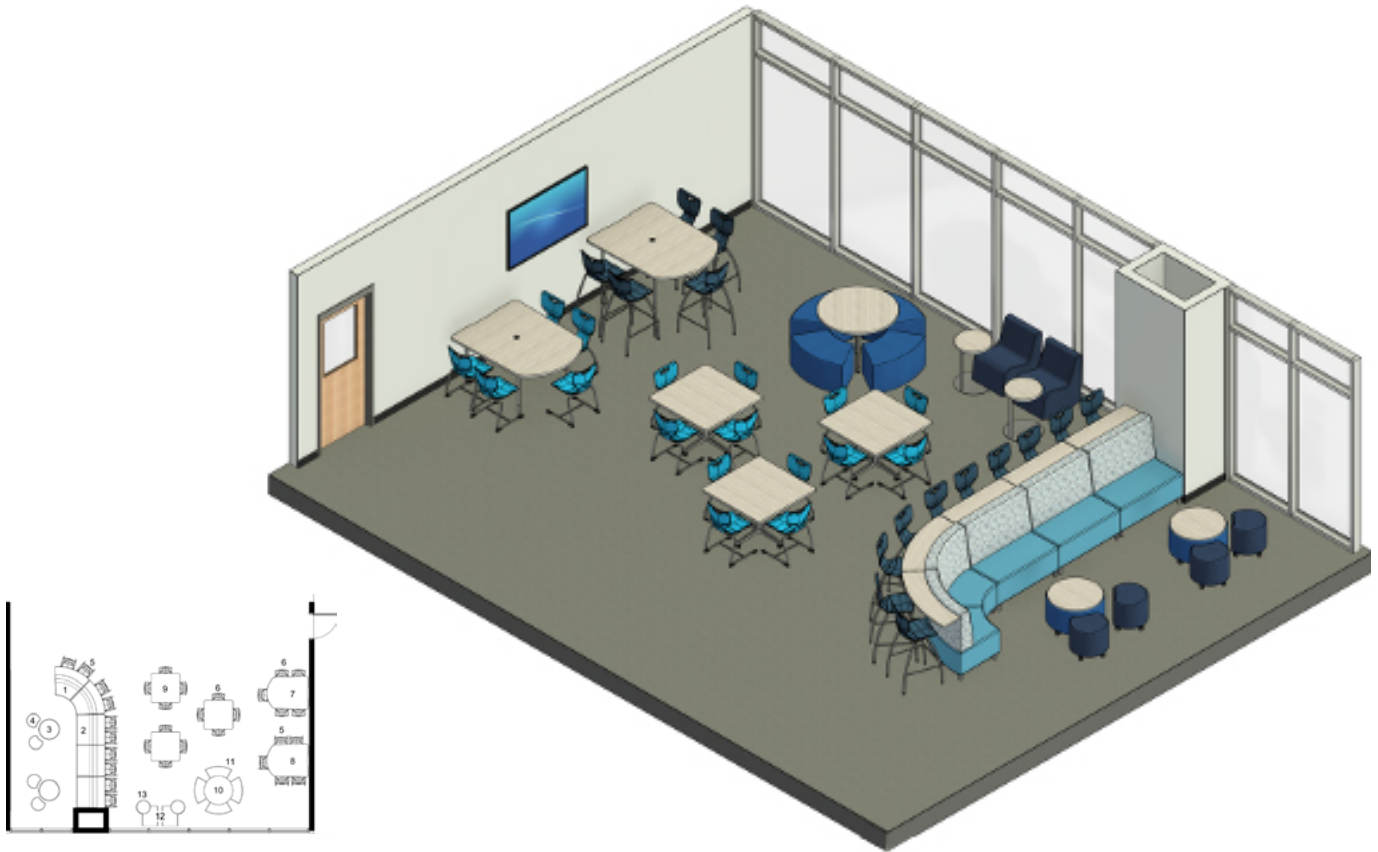
For more information on MooreCo's design and space planning services, please visit moorecoinc.com/contract

Magellan International School: A Forever Home for Transformative Learning



Magellan International School: A Forever Home for Transformative Learning





Magellan International School: A Forever Home for Transformative Learning



Magellan International School: A Forever Home for Transformative Learning

