

MORRIS KIDS SOFT SEATING:

22.5° Bench + Chair



MOORECO™



CONSTRUCTION & FEATURES:

- Soft seating creates a welcoming and comfortable environment by establishing islands of quiet and calm where creativity, collaboration, and socialization can flow naturally.
- Adding flexible seating to your spaces increases a user's sensory experience, shown to improve calmness, focus, and reduce tension. By creating space where humans of all ages can relax, you foster positive attitudes and encourage learning.
- One-third smaller than standard modular seating, Morris Kids soft seating is suggested for K-5 age range. Seat heights are 15" on all units.
- Coordinates with other Morris Kids soft seating pieces to configure as circular, straight, or serpentine arrangements.
- Top stitched sewing details in upholstery. Textiles available through graded-in fabric program, or COM by approval. Includes aluminum legs.
- Available with optional integrated electrical USB and 110v outlets.
- Manufactured in the USA from commercial grade ¾" plywood and hardwoods.
- Tables feature 1" MDF core with a variety of HPL laminate and edge band options.
- Twelve year limited warranty on seating and five years for table versions.
- Prop 65 and CAL 117-2013 compliant. 400 lb. capacity. SCS Indoor Advantage Gold Certified.

AVAILABLE UPGRADES:



Two or more fabrics



HPL Table Top



Power Add-On



Mobility Package



Tablet Arm Add-On



CAL 133 Compliance



Moisture Barrier

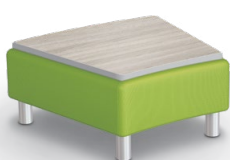
MORRIS KIDS PRODUCT LINE:

22.5° Bench
8000B



15"H × 26.8"W × 24.5"D • 30 lbs

22.5° Table
8000T



12.8"H × 26.8"W × 24.5"D • 39 lbs

22.5° Inside Chair – Armless
8000CIB



29"H × 26.8"W × 24.5"D • 41 lbs

22.5° Inside Chair – Right Arm
8000CIBRH



29"H × 30.1"W × 24.5"D • 56 lbs

22.5° Inside Chair – Left Arm
8000CIBLH



29"H × 30.1"W × 24.5"D • 56 lbs

22.5° Outside Chair – Armless
8000COB



29"H × 26.8"W × 24.5"D • 43 lbs

22.5° Outside Chair – Right Arm
8000COBRH



29"H × 30.1"W × 24.5"D • 56 lbs

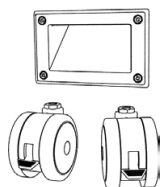
22.5° Outside Chair – Left Arm
8000COBLH



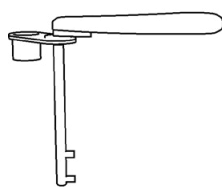
29"H × 30.1"W × 24.5"D • 56 lbs

ACCESSORY OPTIONS:

Mobility Package

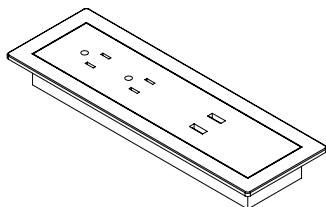


Tablet Arm

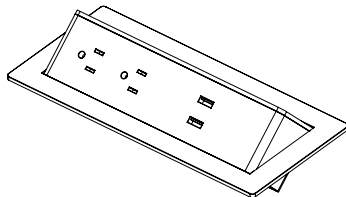


POWER OPTIONS:

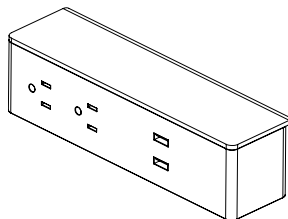
Face-Up Electrical



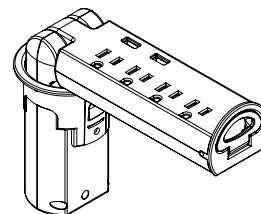
Pop-Up Electrical



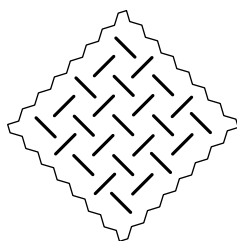
Under Seat Electrical



Pop-Up Grommet Electrical



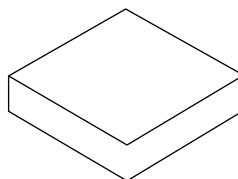
FABRIC OPTIONS:



We partner with several top textile manufacturers to offer you a wide array of fabric choices. A full list of graded-in fabrics is available at moorecoinc.com/price-guides. COM fabrics available on approval.

[VIEW FABRIC GUIDE](#)

TABLE TOP OPTIONS:



View all our extensive laminate and edge band collection at moorecoinc.com/materials. We offer a variety of options to fit any environment or style. Contact your sales representative for lead times and availability.

[VIEW TABLE OPTIONS](#)



MOORECO™

MOORECO INC
2885 Lorraine Avenue | Temple, TX 76501
p: 800.749.2258 | f: 866.888.7483
moorecoinc.com

Soft seating ships FOB Tennessee
Rev 06-02-2025