



MOORECO™

# MORRIS SHAPES SOFT SEATING



## CONSTRUCTION & FEATURES:

- Soft seating creates a welcoming and comfortable environment by establishing islands of quiet and calm where creativity, collaboration, and socialization can flow naturally.
- Adding flexible seating to your spaces increases a user's sensory experience, shown to improve calmness, focus, and reduce tension. By creating space where humans of all ages can relax, you foster positive attitudes and encourage learning.
- Top stitched sewing details in upholstery. Textiles available through graded-in fabric program, or COM by approval. Includes floor safe nylon glides.
- Available with optional integrated electrical USB and 110v outlets.
- Manufactured in the USA from commercial grade ¾" plywood and hardwoods.
- Tables feature 1" MDF core with a variety of HPL laminate and edge band options.
- Twelve year limited warranty on seating and five years for table versions.
- Prop 65 and CAL 117-2013 compliant. 400 lb. capacity.
- SCS Indoor Advantage Gold Certified.

## AVAILABLE UPGRADES:



Two or more fabrics



HPL Table Top



Power Add-On



CAL 133 Compliance



Moisture Barrier

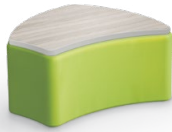
## PRODUCT LINE:

**Morris Shapes Bench**  
900S



18"H × 29"W × 28.5"D • 44 lbs

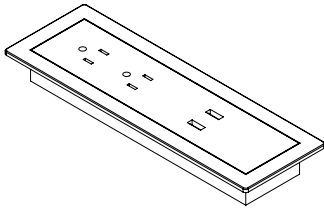
**Morris Shapes Table**  
900T



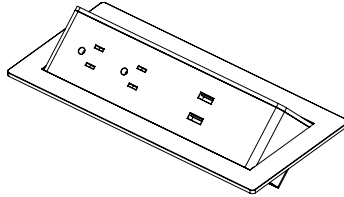
18"H × 29"W × 28.5"D • 54 lbs

## POWER OPTIONS:

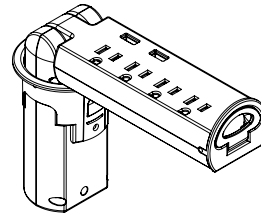
**Face-Up Electrical**



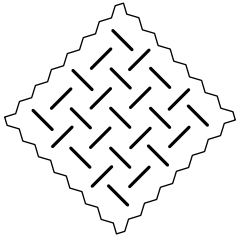
**Pop-Up Electrical**



**Pop-Up Grommet Electrical**



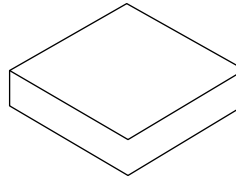
## FABRIC OPTIONS:



We partner with several top textile manufacturers to offer you a wide array of fabric choices. A full list of graded-in fabrics is available at [moorecoinc.com/price-guides](https://moorecoinc.com/price-guides). COM fabrics available on approval.

[VIEW FABRIC GUIDE](#)

## TABLE TOP OPTIONS:



View all our extensive laminate and edge band collection at [moorecoinc.com/materials](https://moorecoinc.com/materials). We offer a variety of options to fit any environment or style. Contact your sales representative for lead times and availability.

[VIEW TABLE OPTIONS](#)



**MOORECO**<sup>TM</sup>

**MOORECO INC**  
2885 Lorraine Avenue | Temple, TX 76501  
p: 800.749.2258 | f: 866.888.7483  
[moorecoinc.com](https://moorecoinc.com)

Soft seating ships FOB Tennessee  
Rev 06-02-2025