

thrive in care

Human-Centered Design for Healthcare Spaces



MOORECO®



moorecoinc.com/thrive



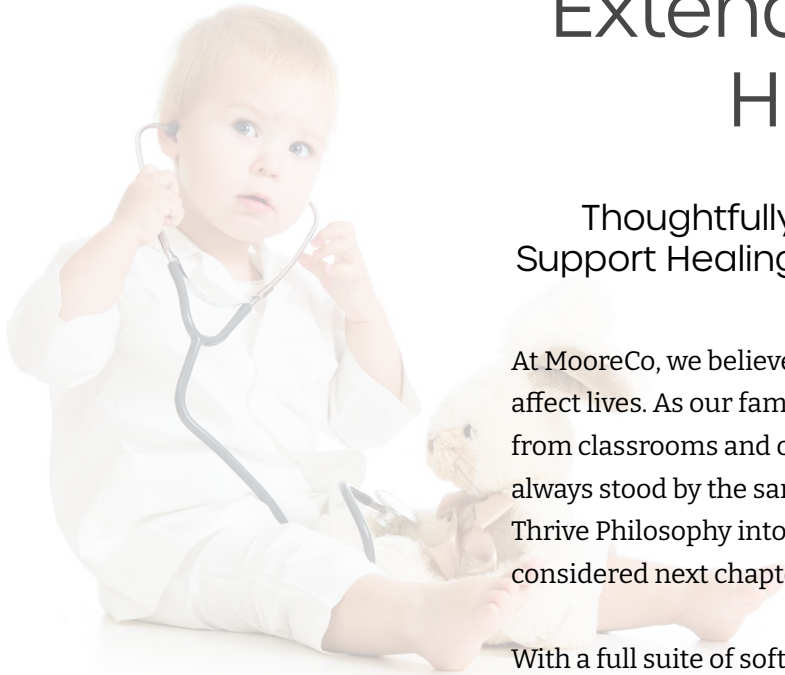
Extending Thrive into Healthcare:

Thoughtfully Designed Environments that Support Healing, Dignity, and Human Connection

At MooreCo, we believe that thoughtful design has the power to affect lives. As our family of products has grown over decades from classrooms and offices to break rooms and campuses we've always stood by the same truth: spaces shape people. Extending the Thrive Philosophy into healthcare is not a leap, but a logical, deeply considered next chapter.

With a full suite of soft seating, casegoods, chairs, stools, tables, storage, visual communication tools, and flexible furniture systems already proven in learning and professional environments, we're uniquely equipped to meet the demands of care settings. Our designs are rooted in well-being, durability, versatility, and human-centered purpose, and they transition naturally into healthcare.

Though MooreCo may be new to the healthcare market, our principles of human-centered design are tried and true. We know how environments influence comfort, dignity, healing, and connection. Our experience in designing for growth, collaboration, and wellness gives us the insight and confidence to speak with authority. Because when environments support people, they don't just function; they help everyone thrive.



MOORECO®

2885 Lorraine Avenue | Temple, TX 76501
p: 800.749.2258 | f: 866.888.7483
www.moorecoinc.com

©2026 MooreCo, Inc. All rights reserved. MooreCo reserves the right to correct pricing and/or copy errors. Due to the current volatility in the price of raw and finished materials, please refer to our latest online price guides for availability, pricing, and shipping information.

How MooreCo supports the Six Facets of Thrive in Healthcare Spaces:



Physical: "I Can Move & Fit"

Our ergonomic seating options, adjustable tables, modular casegoods and flexible layouts allow users to change posture, move easily, and remain comfortable in long sessions. Durable, easy-clean surfaces also support hygiene, safety, and healthy movement for patients, families, and care teams alike.



Intellectual: "I Can Think & Engage"

With configurable tables, mobile work surfaces, and adaptable furniture, our spaces support active thinking and collaboration, whether it's charting a care plan, reviewing treatment materials, training staff, or supporting a patient's family through information sessions. Versatility encourages clear thinking and adaptive use.



Social-Emotional: "I Belong & Connect"

Soft seating clusters, welcoming lounge areas, and flexible gathering spots foster human connection, empathy, and supportive interaction, helping patients, families, and caregivers feel seen, safe, and part of a caring community.



Psychological: "I Feel Safe & Supported"

Quiet rooms, private consultation areas, and calming upholstery tones give people privacy, dignity, and emotional peace. Cleanable, well-designed furnishings offer reliability and order, which support mental well-being in sometimes stressful environments.



Moral: "I Feel Included & Respected"

Inclusive design, from accessible seating and casegoods to flexible layouts that accommodate varying needs, reinforces dignity and respect for all individuals. MooreCo furnishings help make healthcare spaces welcoming and equitable.



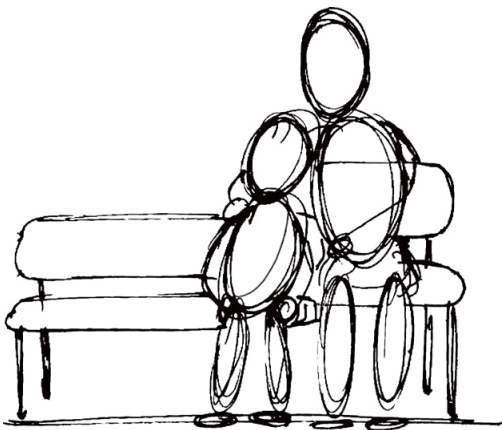
Spiritual: "I Can Breathe, Reflect & Heal"

With calming palettes, restful lounge zones, and thoughtful design, our environments nurture peace, comfort, and emotional recovery. Biophilic cues such as natural textures, organic shapes, and non-glare surfaces bring the restorative calm of nature indoors. These spaces become more than functional; they offer solace, hope, and human-centered care.



coradle™
BY MOORECO

It starts with a hug.



The Coradle healthcare collection is a complete furniture system for pediatric waiting rooms, family lounges, and clinical spaces, designed to put children at ease and parents at peace. Coradle was born from the powerful concept of comfort brought by the embrace of a caring parent or loved one.

Guided by our Thrive Philosophy and the gentle strength of curves, forms that protect, embrace, and invite, Coradle encourages children to explore, shift, and interact with their environment and with one another, fostering social connection, play, and discovery. This helps reduce anxiety while building independence and confidence, allowing children to navigate the discomfort of waiting rooms on their own terms while parents remain close, connected, and mindful.



Each curve in the Coradle design is intentional, designed to echo that innate sense of safety and embrace.

Coming Soon!

— Fall 2026 —

Every piece of Coradle is thoughtfully designed to support natural activity and movement, working with it, not against it



Product renderings, features, specifications, finishes, and dimensions shown for the Coradle line are preliminary and subject to revision prior to official product launch.

Coradle™ Design Story

Coradle's design includes soft, scaled seating forms that support play, choice, and self-directed comfort while the layered seating allow adults and children to experience comfort and proximity. Tables provide sturdy anchors for activities, perimeter pieces add flexible support, and free-standing screens help define zones for privacy and decompression while maintaining visibility and family connection.

Unlike traditional healthcare furniture designed to control behavior, Coradle is designed to transform the experience of care. It brings ease to clinical spaces by giving children room to explore, families a place to gather, and caregivers the opportunity to engage—creating environments that feel less like waiting rooms and more like places of comfort, connection, and trust.

Coming
Soon!
— Fall 2026 —



Design Principles

Designed around real behavior, Coradle allows children to explore, families to gather, and caregivers to breathe.



Approachable:

Soft scaled forms welcome toddlers, teens, parents, and caregivers.



Playful:

Layered seating invites movement, choice, and self-directed comfort.



Connected:

Sightlines keep families connected, even across a larger room.



Reassuring:

Warm, soft, and durable materials are engineered for healthcare environments without feeling clinical.

Product renderings, features, specifications, finishes, and dimensions shown for the Coradle line are preliminary and subject to revision prior to official product launch.



Coradle™ was designed and developed in partnership with Qdesign, a leading contract furniture product development partner known for award-winning designs that seamlessly combine form and function. In partnership with Whitney Architects, they connect product and architectural design to create solutions that transform and define spaces.



The Coradle™ Difference

Most healthcare furniture is designed around behavior management. Coradle is designed around behavior, period. Children explore. Families gather. Caregivers breathe. The result is a space that feels less like a waiting room and more like a place to be held.

Materials + Construction

Coradle is designed with healthcare-grade upholstery options, soft rounded edges, approachable forms, and durable surfaces engineered for high-traffic clinical environments, cleanable to healthcare standards.



Coradle™ Healthcare: Guest Seating

Layered seating invites movement, play, and gentle interaction, helping ease the stress of waiting and turning anxious moments into opportunities for calm and connection.



Adult Chair Armless
CRVAS20-N-NG-PL-SX
31.5"H x 20"W x 24"D



Adult Chair w-Arms
CRVAS20-A-NG-PL-SX
31.5"H x 23.5"W x 24"D



Adult Loveseat Armless
CRVAS42-N-NG-PL-SX
31.5"H x 42"W x 24"D



Adult Loveseat w-Arms
CRVAS42-A-NG-PL-SX
31.5"H x 45.5"W x 24"D



Adult Bariatric Chair
CRVASBR-A-NG-PL-SX
31.5"H x 34.5"W x 24"D



Adult Bench
CRVASBN-NG-PL-SX
18"H x 60"W x 22"D



Kids Chair Armless
CRVCS17-N-NG-PL-SX
25"H x 16.5"W x 20"D



Kids Bench
CRVCSBN-NG-PL-SX
14"H x 60"W x 19"D



Kids Modular Double Seat Bench + Back
CRVMODST-NG-PL-SX
25"H x 37"W x 20"D



Adult + Kids Combo Seat Left
CRVCM LH-NG-PL-SX
31.5"H x 52"W x 24"D



Adult + Kids Combo Seat Right
CRVCMRH-NG-PL-SX
31.5"H x 52"W x 24"D

Product renderings, features, specifications, finishes, and dimensions shown for the Coradle line are preliminary and subject to revision prior to official product launch.

Coming Soon!

— Fall 2026 —

Coradle Guest Seating delivers durable comfort, cleanability, and family-focused support for modern healthcare spaces.



Coradle includes companion seating thoughtfully scaled for both adults and children within healthcare spaces.



coradle
BY MOORECO

Coming Soon!

— Fall 2026 —

Coradle Tables create welcoming and accessible healthcare spaces that support comfort, engagement, and easy maintenance.



coradle
BY MOORECO

Coradle™ Healthcare: Tables

Coradle tables serve as natural hubs for activity and dependable surfaces for everyday use. Their softened forms and gentle curves reinforce a sense of calm and connection throughout the space.



**Sensory Kneeling Table
(No Tray)**
CRVSEN-K-N-XXXX-XXXX-SX
19"H × 39"W × 39"D



**Sensory Kneeling Table
(With Tray)**
CRVSEN-K-W-XXXX-XXXX-SX
19"H × 39"W × 39"D



**Sensory Sitting Table
(No Tray)**
CRVSEN-S-N-XXXX-XXXX-SX
22"H × 39"W × 39"D



**Sensory Sitting Table
(With Tray)**
CRVSEN-S-WT-XXXX-XXXX-SX
22"H × 39"W × 39"D



**Common Kneeling
Table (36")**
CRVTB-K-36-XXXX-XXXX-SX
19"H × 36"W × 36"D



**Common Kneeling
Table (42")**
CRVTB-K-42-XXXX-XXXX-SX
19"H × 42"W × 42"D



**Common Sitting Table
(36")**
CRVTB-S-36-XXXX-XXXX-SX
22"H × 36"W × 36"D



**Common Sitting Table
(42")**
CRVTB-S-42-XXXX-XXXX-SX
22"H × 42"W × 42"D



Sensory Kneeling Pad
CVKP-RD60-SX
2"H × 60"W × 60"D



Side Table
CRVST-SQ20-NG-XXXX-XXXX-SX
20"H × 20"W × 20"D



Activity Station
CRVACT-SS-XXXX
22"H × 35"W × 22"D



Modular Table – Corner
CRVMOD-C-PL-XXXX-XXXX
18"H × 19"W × 19"D



Modular Table – End
CRVMOD-E-PL-XXXX-XXXX
18"H × 19"W × 16"D



**Modular Table –
Straight**
CRVMOD-S-PL-XXXX-XXXX
2"H × 22"W × 16"D



**Modular Table –
T-Shape**
CRVMOD-T-PL-XXXX-XXXX
2"H × 22"W × 19"D

Coradle™ Healthcare: Perimeter Pieces

Designed to support without interrupting, flexible perimeter pieces shape space with ease. They create defined zones, layer in privacy, preserve sightlines, and keep environments calm, open, and connected.



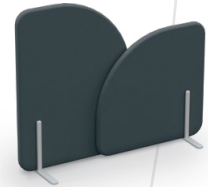
Single Divider (3636)
CRVDIV-S-3636-SX
36"H × 36"W × 20"D



Single Divider (4836)
CRVDIV-S-3648-SX
48"H × 36"W × 20"D



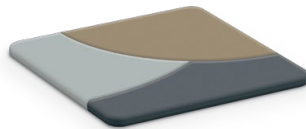
Double Divider (4848)
CRVDIV-D-4848-SX
48"H × 48"W × 20"D



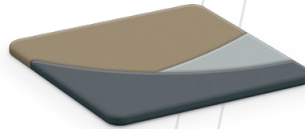
Double Divider (4860)
CRVDIV-D-6048-SX
48"H × 60"W × 20"D



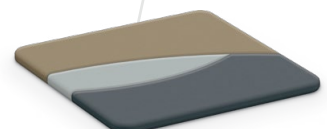
Floor Pad (3636) – Solid
CRVFLPD-SQ36-SOL-SX
2"H × 36"W × 36"D



Floor Pad (3636) – Hills
CRVFLPD-SQ36-HIL-SX
2"H × 36"W × 36"D



Floor Pad (3636) – Waves
CRVFLPD-SQ36-WAV-SX
2"H × 36"W × 36"D



Floor Pad (3636) – Dunes
CRVFLPD-SQ36-DUN-SX
2"H × 36"W × 36"D



Wobble Stool
CRVWBL-SX
15"H × 14"W × 14"D



Trio Pouf
CRVTRIO-NG-SX
16"H × 40"W × 33"D



coradle™
BY MOORECO

Coming
Soon!

— Fall 2026 —

Coradle Dividers define activity zones without sacrificing openness, visibility, or the welcoming feel of shared spaces.



Product renderings, features, specifications, finishes, and dimensions shown for the Coradle line are preliminary and subject to revision prior to official product launch.

Pediatric Discovery & Waiting Lounge

Where care isn't dreaded and even the wait feels exciting.

This bright, activity-rich pediatric waiting area is built to engage children's curiosity while helping families feel at ease. Elevated colors and playful patterns set an optimistic tone, with cozy zones for reading, quiet play, and creative exploration.

Elevate Wind ottomans, Soft Sway Rockers, and all-foam seat pads create child-friendly comfort that's safe, sturdy, and simple to clean.

Morris seating ensures adults have supportive places to settle in, while youth-height tables and Hierarchy chairs make the environment accessible for kids of all ages.

With thoughtful storage from Array and Porto, this is a space that invites calm, even when little ones bring big energy.

Featured Finishes:



Featured Products:

- A. Elevate Wind Round Ottoman
- B. Elevate Wind Quartile Ottoman
- C. Elevate Wind 90° Arch
- D. Soft Sway Rocker
- E. Morris Chair
- F. Morris Loveseat
- G. All Foam Sun Seat Pad
- H. All Foam Cloud Seat Pad
- I. All Foam Star Seat Pad
- J. Elevate Wind Down Nook
- K. Array Shelving
- L. Porto Angled Single Sided Book Cart
- M. Hierarchy Activity Table
- N. Hierarchy 4-Leg Chair



Porcelain steel delivers a nonporous, ultra-cleanable surface ideal for high-touch healthcare environments.



With new caster options, Privacy Pods glide out of the way to support efficient sanitization.



F

C

E

D

Care & Consultation Welcome Space

A softer welcome for moments that matter.

This reception space is designed to gently lower the stress of waiting—whether for an appointment, test results, or a loved one. Calm neutrals and soothing tones set a quiet, restorative mood, while Akt lounge seating creates an open, airy flow that feels intentionally unobtrusive.

High floor clearance and purposeful gaps between seats, arms, and backs make cleaning easy and help maintain a visibly hygienic environment. Privacy Pods add enclosed comfort where personal space is needed, and the Recto straight desk offers a modern, approachable greeting point.

With thoughtful design in every detail, this waiting room brings comfort, clarity, and calm to the care journey.

Featured Finishes:



Cotton CV



Silica Blend



Lasanna CV



Kingswood
Walnut

Featured Products:

- A.** Akt Lounge Sofa
- B.** Akt Lounge Chair
- C.** Akt Lounge Corner Chair
- D.** Akt Ottoman
- E.** Akt Lounge Table
- F.** Privacy Pods
- G.** Elate Task Chair
- H.** Array Shelving
- I.** Recto Reception Desk

Patient Welcome & Reception Suite

Where first impressions become moments of calm.

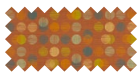
Stepping into this clinic reception feels like taking a deep breath. Earthy oranges and soft blue-greens create a warm, grounded welcome designed to ease anxiety from the moment guests arrive.

Multiple seating choices—from Morris chairs and sofas to poufs and Elevate Wind ottomans—honor privacy, comfort, and connection, allowing visitors to choose the experience that feels right for them, whether they seek solitude or interaction.

Low-maintenance fabrics and cleanable surfaces support a healthier, more hygienic experience, while the Recto C-shaped desk anchors the space with a friendly, open presence.

This is a waiting room that doesn't feel clinical—it feels human. A place where comfort, choice, and calm set the tone for the care ahead.

Featured Finishes:



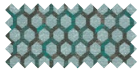
Silica Bauble



Silica Etch



Silica Flick



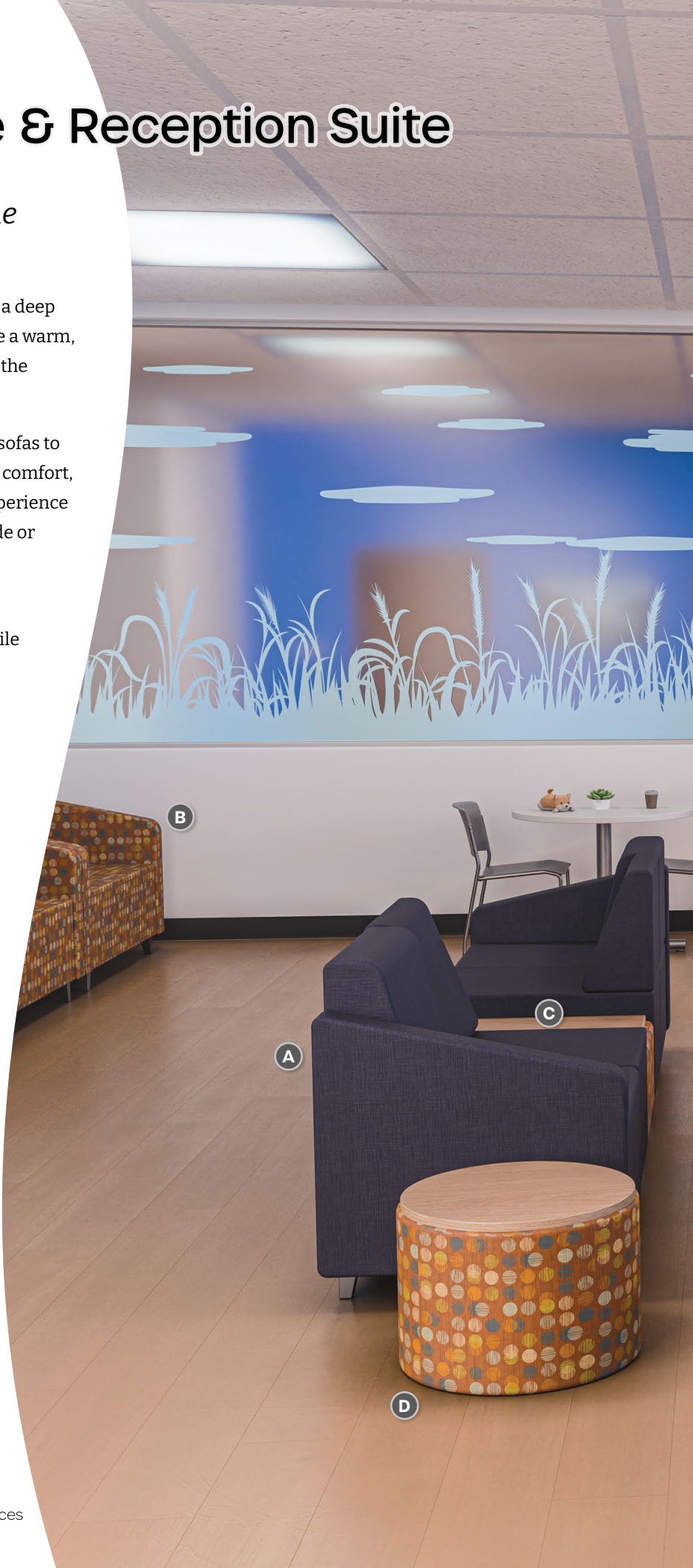
Silica Fresco



New Age Oak

Featured Products:

- A. Morris Chair
- B. Morris Loveseat
- C. Morris Bench
- D. Morris Pouf Stool
- E. Elevate Wind Hexagonal Ottoman
- F. Blossom Round Ottoman
- G. Elevate Wind Round Ottoman
- H. Orbit Low Back Chair
- I. Akt 4-Leg Chair
- J. Inklüd X-Base Table
- K. Recto Reception Desk





EXIT

I

J

F

G

H

K

E

Colors and textures found in nature help foster a sense of calmness and ease anxieties. Room to breathe and move provides a sense of freedom.



A

B

C

Warm and earthy colors matched with durable storage, flexible seating, and easy to clean setups support patients and staff alike.

Pediatric Renewal Lounge

Nature's palette, reimagined for young hearts.

Earthy blues, greens, and terracotta tones bring a sense of outdoor serenity into this pediatric waiting space.

Soft, low-profile Akt lounge seating creates a warm, approachable environment for both kids and caregivers, while a designated enclosed play zone, divided with durable Array Bookshelves for storage, offers a safe space for children to decompress or explore quietly.

Elevate Wind elements add flexible gathering spots, and Dot Rocking Stools give young visitors an outlet for movement.

Durable materials and easy-clean surfaces make upkeep simple for staff while supporting a healthier environment. The result is a gentle, grounding space where families can settle, breathe, and feel cared for.



Featured Finishes:



Featured Products:

- A. Akt Lounge Bench
- B. Akt Lounge Chair
- C. Dot Rocking Stool
- D. Dot Storage Cart
- E. Array Book Case
- F. Elevate Wind

Employee Rest & Recharge Suite

A breath of calm between moments of care.

Just like the oxygen-mask principle reminds us, caregivers must care for themselves before they can care for others. Doctors, nurses, and support staff face intense, high-pressure situations every day, and they deserve spaces that replenish calm, restore focus, or provide an energizing boost. This breakroom is designed as that essential refuge.

Blending earthy cayenne, deep-sea blues, and warm natural tones, the environment creates an immediate sense of grounding and restoration for healthcare staff. The palette supports emotional recovery, helping ease stress the moment they step inside.

A thoughtful mix of lounge seating, table zones, and a fully integrated kitchenette accommodates a range of needs—sharing a meal, having a quick conversation, or simply enjoying a moment of solitude.

Tru-Plush™ Morris seating will relax tired bodies and minds from long shifts and rough days. Meanwhile Akt chairs and stools pair with Inklüd and Community Tables to offer flexibility and ergonomic support to re-energize and connect with peers.

Durable, easy-clean materials maintain a fresh and hygienic setting, reinforcing a vital message: staff well-being is not secondary—it is essential to delivering exceptional patient care.

Featured Finishes:



Note CV



Note CV



Tan Echo



Frosty White

Featured Products:

- A. Community Table
- B. Akt 4-Leg Stool
- C. Inklüd Pedestal Table
- D. Akt 4-Leg Chair
- E. Morris Loveseat
- F. Morris Chair
- G. Morris Corner Bench
- H. Morris Single Bench



Providing staff with a comfortable and comforting place to relax, recharge, and unwind is crucial for the well-being of all.



A

F

G

E

H

D

C

A light-filled dining space with access to nature provides serenity, peace, and a moment to nourish oneself.



Patient & Family Dining Lounge

A restorative and nourishing space within reach.

Cafeterias in healthcare environments are becoming more than just places to eat—they're spaces designed to restore well-being, reduce stress, and foster a sense of normalcy for patients, families, and staff. Research in evidence-based design shows that thoughtful cafeteria layouts and environments can enhance mood, improve staff morale, and increase operational revenue. When designed with care, these spaces support not only nutritional needs but also emotional and psychological recovery.

With pale blues, warm wood tones, and a clean, streamlined aesthetic, this cafeteria offers a serene break from the clinical pace of healthcare settings. Booth-style arrangements using Akt loveseats create intimate zones, while open walkways and simple lines maintain spatial clarity and ease of movement.

Inklüd tables and Seed chairs provide sturdy, ergonomic seating that invites patients, visitors, and healthcare professionals to pause and recharge. Studies indicate that comfortable, thoughtfully arranged dining spaces can improve satisfaction and even reduce staff turnover.

Beyond comfort, the space is equipped with easy-clean surfaces and durable materials that uphold long-term hygiene standards and repetitive use. The design balances efficiency with empathy, creating a cafeteria that does more than serve meals—it serves the mission of healing.

Featured Finishes:



Anthology CV



French Pear



Frosty White

Featured Products:

- A.** Inklüd X-Base Table
- B.** Seed 4-Leg Chair
- C.** Akt Lounge Loveseat

Private Consultation & Connection Room

A safe space for honest conversations.

The design of a consultation room plays a critical role in shaping the emotional tone of patient-provider interactions and trust building. Research in healthcare design consistently shows that calm environments can reduce anxiety and increase openness. A space where a patient perceives empathy communicates trust in the provider and builds confidence in decision making and action planning.

Earthy, nature-inspired colors create a warm, grounded backdrop, while soft seating from Akt, Orbit, and Soft Sway offers comfort without formality.

Instead of a traditional imposing desk, a Community Table brings patient and provider together at equal footing, fostering trust and connection.

Thoughtful furnishings and cleanable materials maintain a supportive, hygienic setting. Here, vulnerability is met with dignity, and every conversation is held with care.

Featured Finishes:



Silica Likely



Silica Leather



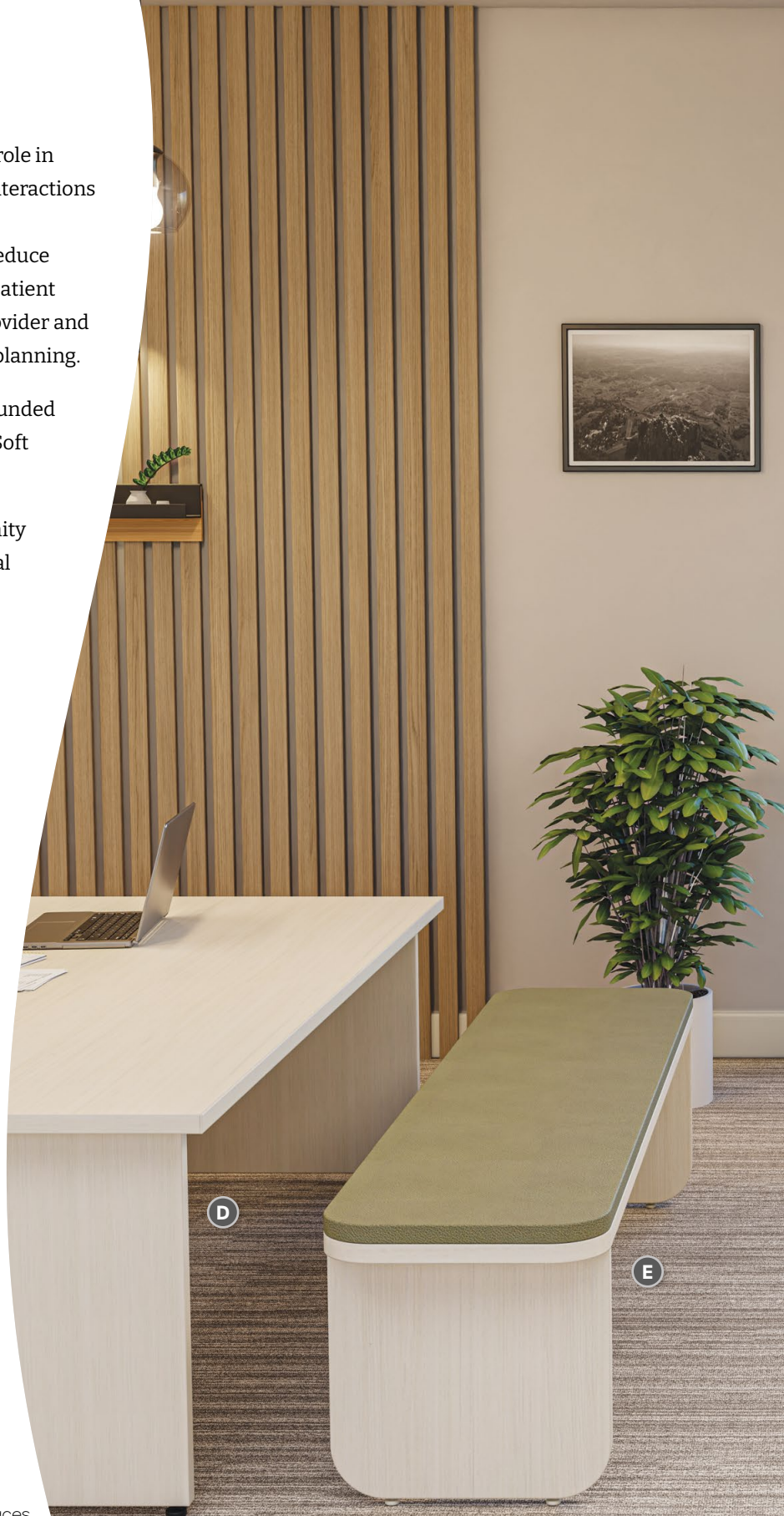
Silica Thatch



Pale
Brushstroke

Featured Products:

- A. Akt Lounge Sofa
- B. Soft Sway Rocker
- C. Luly Occasional Table
- D. Community Table
- E. Community Bench

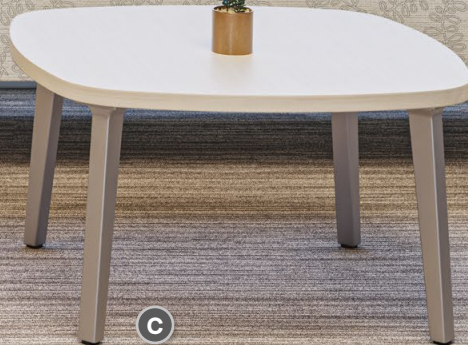


Creating a space of calm to invite relaxation, sharing, and trust enhances the patient experience, and builds bonds with caregivers.

A



C

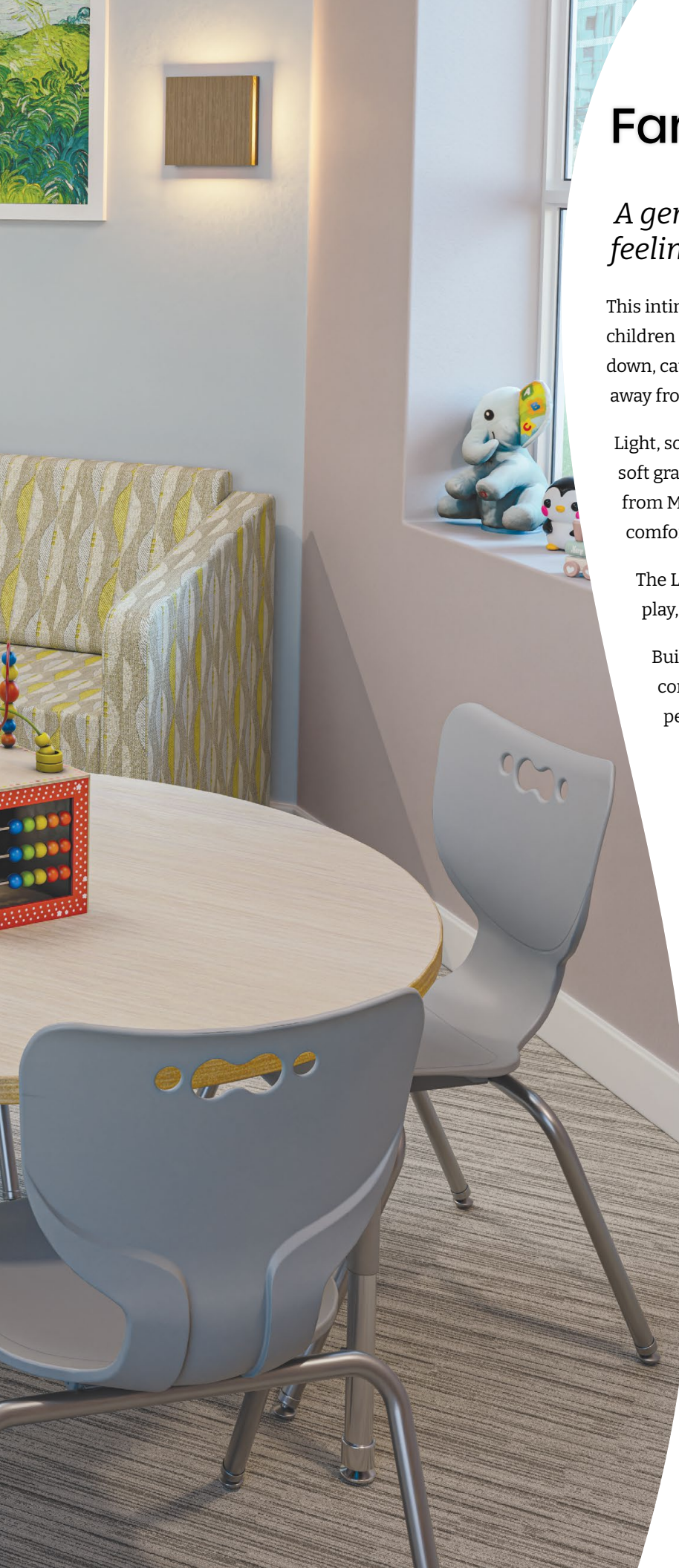


B



By providing an intimate and quiet refuge for parents and children, emotions and energy can be managed with care and compassion, while respecting the needs of all.





Family Quiet Retreat

A gentle and private space for big feelings.

This intimate quiet room offers a soft landing place for children and caregivers alike—a space shaped for calming down, catching a breath, or finding a moment of privacy away from clinical activity.

Light, soothing colors like pale blue, yellow-green, tan, and soft gray wrap the room in warmth, while plush seating from Morris and child-friendly Orbit Kids chairs create comforting zones for rest or conversation.

The Luly table and Hierarchy furniture support quiet play, reading, or simple togetherness.

Built for emotional grounding, this room balances comfort, safety, and ease of maintenance in one peaceful refuge.

Featured Finishes:



Improv CV



Silica Etch



Beigewood

Featured Products:

- A.** Morris Sofa
- B.** Orbit Kids Low Back Chair
- C.** Luly Occasional Table
- D.** Hierarchy Activity Table
- E.** Hierarchy 4-Leg Chair

Fresh Air Sanctuary

A breath of nature right where it's needed most.

From the 19th century onward, medicine has relied on the restorative power of nature as a central role in patient care. Hospitals and sanatoriums would treat conditions such as high blood pressure, jaundice, and respiratory illnesses by prescribing fresh air, sunlight, and rest in open-air pavilions. These environments weren't just scenic—they were essential to recovery. Outdoor environments have proven to support patients experiencing trauma, anxiety, or behavioral distress, helping reduce agitation, regulate mood, and promote a sense of calm.

This outdoor courtyard offers a welcome escape from the pace and pressure of healthcare environments. With leafy greens, ocean blues, and warm terracotta tones, it invites patients, families, and staff to reconnect with nature through fresh air, sunlight, and quiet movement.

Outdoor-safe seating, from Phoeby lounges to comfy Beanies, creates cozy pockets for conversation, meals, or private reflection.

Durable, weather-ready fabrics ensure long-lasting comfort and easy maintenance, while landscaping and water features soften the experience. It's a restful sanctuary where the outdoors becomes part of the healing journey.

Featured Finishes:



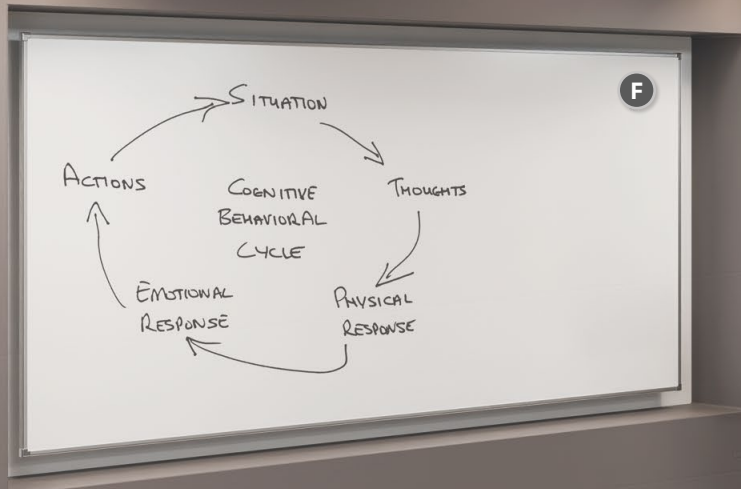
Featured Products:

- A. Phoeby Outdoor Chair
- B. Phoeby Outdoor Loveseat
- C. Phoeby Outdoor Bench
- D. Beanies Outdoor Fava Lounge Chair
- E. Beanies Outdoor Rectangle Ottoman
- F. Beanies Outdoor Round Ottoman



Enhancing outdoor comfort and relaxation with weather-safe Phoeby and Beanie seating allows a moment of nature connection for patients, families, and caregivers.





D



Learning and the sharing of knowledge is crucial to providing exceptional care. Supporting staff and training with comfortable, flexible furniture that supports updated technology provides a firm foundation for education.

Professional Development Center

Where education becomes a shared and supported experience.

We know a thing or two about how to maximize the learning experience. Spaces must be agile, adaptable and inviting. Environments which foster collaboration, critical thinking, communication, and conflict resolution. Most importantly, environments that are inclusive to every type of learner, with furniture supporting physical, social-emotional, and psychological needs.

Clean lines, calming blues and grays, and modern technology create a highly functional training environment designed for flexibility and collaboration.

Inklüd flip-top tables on casters allow the room to reconfigure quickly—from presentations to group discussions to hands-on practice.

Seed seating provides ergonomic comfort for long sessions, while Compass cabinetry keeps tools and materials neatly stored.

The iTeach® Spider cart with large display and the interactive projector board support dynamic instruction, ensuring every learner stays engaged.

Easy-clean surfaces and durable materials help maintain a professional, polished look. It's a space made to adapt, energize, and support ongoing growth and continuing education.

Featured Finishes:



Beigewood

Featured Products:

- A.** Inklüd Flip Top Table
- B.** Seed 4-Leg Chair
- C.** Seed Cantilever Stool
- D.** iTeach® Spider Flat Panel Cart
- E.** Inklüd Mobile Whiteboard
- F.** Interactive Projector Board

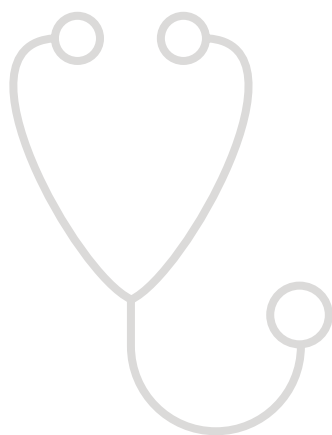
If you're ready to bring thoughtful, human-centered design to your healthcare spaces, we're here to help.

Rooted in our Thrive Philosophy, every product we create is guided by a deep commitment to enhancing well-being, dignity, and connection in care environments. Our passion lies in designing solutions that don't just serve a function, but also elevate the experience of patients, families, and caregivers alike.

Contact us to learn more about any of the products featured in this look book, or to explore a complete solution tailored to the unique needs of your space.



moorecoinc.com/healthcare







MooreCo Inc.

2885 Lorraine Avenue | Temple, TX 76501

p: 800.749.2258 | f: 866.888.7483

www.moorecoinc.com



[instagram.com/mooreco_inc](https://www.instagram.com/mooreco_inc)



[pinterest.com/moorecoinc](https://www.pinterest.com/moorecoinc)



[facebook.com/moorecoinc](https://www.facebook.com/moorecoinc)



[linkedin.com/company/mooreco-inc](https://www.linkedin.com/company/mooreco-inc)



moorecoinc.bsky.social



[youtube.com/moorecoinc](https://www.youtube.com/moorecoinc)



[tiktok.com/@moorecoinc](https://www.tiktok.com/@moorecoinc)



703673125833