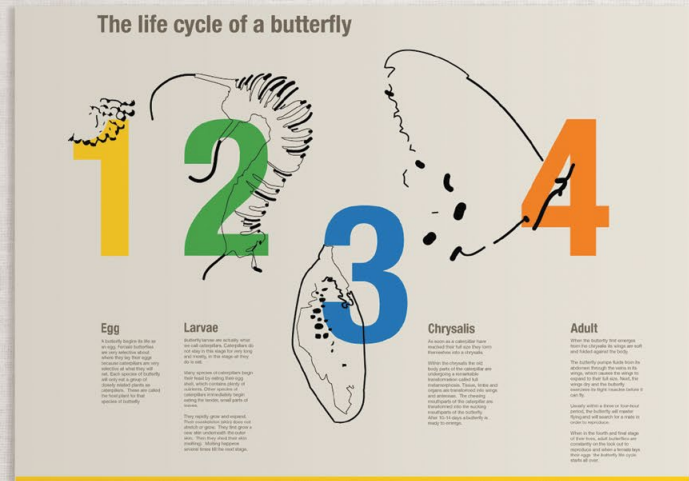
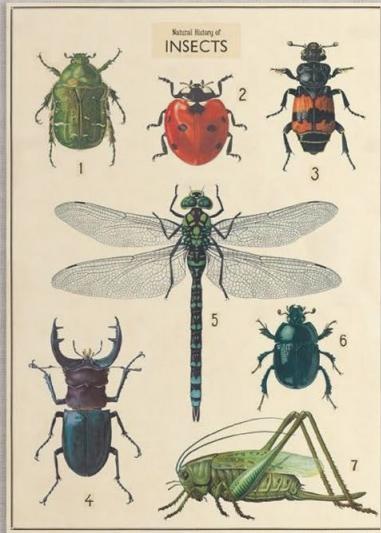


VIN-TAK TACKBOARD

with Aluminum Trim

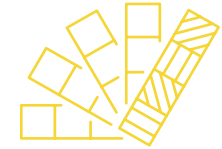


Get on board with durability and style.

Vinyl fabric over a tackable substrate for a board with long lasting appeal.



MOORECO

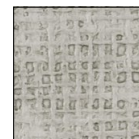


This product is customizable! View our most up-to-date fabric and finish catalog online by scanning the QR code or visiting moorecoinc.com/materials

VINYL COLOR OPTIONS:



Gray
44



Platinum
56



Sterling
77

VINYL TACKBOARD - ALUMINUM TRIM

- Get on board with durability and style. Vinyl fabric over a tackable substrate for a board with long lasting appeal. Fabric-backed vinyl over a tackable substrate makes a low-maintenance and attractive tackboard. An easy to clean surface, the vinyl is treated to resist the growth of odor- and stain-causing microbes.
- Choose from three substrate options to fit your requirements or budget:
- **Vin-Tak:** Our most economical and best value surface, Vin-Tak features vinyl adhered to 7/16" lightweight and tackable substrate material.
- **Vinyl Add-Cork:** Step up to our select Add-Cork surface, which features vinyl adhered to a 1/8" thick cork layer bonded to 3/8" thick durable substrate material.
- **Vinyl Cork-Plate:** Premium Cork-Plate surface is our top of the line option, featuring vinyl adhered to a full 1/4" thick cork layer bonded to 1/4" thick rigid and moisture-resistant substrate material.
- Featured with standard 7/8" clear anodized aluminum trim with hairline mitered corners. Anodized black aluminum trim available at an upcharge.
- Ten year limited warranty. SCS Indoor Advantage Gold Certified.

VINYL TECHNICAL INFORMATION

- Vinyl tackboards are fade-resistant and are easily cleaned with detergents and water.
- The vinyl covering meets or exceeds all requirements of Federal Specifications CCCW-408A Quality Standard for Vinyl Coated Fabric Wallcovering CFFA-W-101A, and the Standard Classification of Wallcoverings by Durability Characteristics of ASTM-F-793-82 for the type and category classified, including 24 hour cleanability tests based on ASTM method D1308.
- The vinyl is treated with an antimicrobial to resist the growth of mildew and bacteria.

PART NO.	DIMENSIONS	SHIP WT.
VIN-TAK		
311AA	1.5H x 2W	5 lbs
311AB	2H x 3W	14 lbs
311AC	3H x 4W	22 lbs
311AD	4H x 4W	41 lbs
311AF	4H x 5W	48 lbs
311AG	4H x 6W	52 lbs
311AH	4H x 8W	63 lbs
311AK	4H x 10W	75 lbs
311AM	4H x 12W	110 lbs

PART NO.	DIMENSIONS	SHIP WT.
VINYL ADD-CORK		
312AA	1.5H x 2W	6 lbs
312AB	2H x 3W	12 lbs
312AC	3H x 4W	20 lbs
312AD	4H x 4W	39 lbs
312AF	4H x 5W	46 lbs
312AG	4H x 6W	49 lbs
312AH	4H x 8W	64 lbs
312AK	4H x 10W	71 lbs
312AM	4H x 12W	104 lbs

PART NO.	DIMENSIONS	SHIP WT.
VINYL CORK-PLATE		
313AA	1.5H x 2W	6 lbs
313AB	2H x 3W	14 lbs
313AC	3H x 4W	22 lbs
313AD	4H x 4W	44 lbs
313AF	4H x 5W	55 lbs
313AG	4H x 6W	66 lbs
313AH	4H x 8W	88 lbs



MOORECO INC.
 2885 Lorraine Avenue | Temple, TX 76501
 p: 800.749.2258 | f: 866.888.7483
moorecoinc.com