

buy the board

BOARD OPTIONS REFERENCE GUIDE



MOORECO™





MooreCo Inc.

2885 Lorraine Avenue | Temple, TX 76501

p: 800.749.2258 | f: 866.888.7483

www.moorecoinc.com

©2022 MooreCo, Inc. All rights reserved.

MooreCo, Inc. reserves the right to correct pricing or copy errors.

Due to the current volatility in the price of raw and finished materials, please refer to our web site for the latest price list for pricing. Since individual items are subject to availability of materials from our suppliers, we reserve the right to limit quantities.

All shipping weights are nominal and may vary depending on items and quantities ordered. When ordering please contact MooreCo customer service at 1-800-749-2258 for accurate shipping rates and lead times.

Board dimensions reflect panel sizes prior to framing. All boards listed as 3'H x 4'W actually measure 33-3/4"H x 48"W due to shipping restrictions. Dimensions on all glass dry erase boards are estimated and may vary slightly.

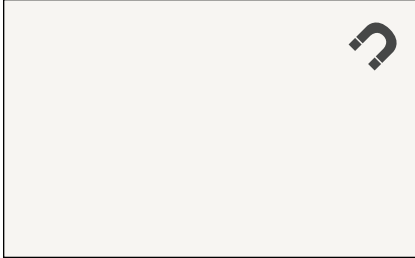
Return Policy: A return authorization is required for the return of any merchandise. All requests for returns should be made within 90 (ninety) days of receipt of merchandise. The dealer may be responsible for restock and return freight charges. Returned products must be unused, undamaged, and in the original packaging. Please contact customer service for more details. Returned merchandise may be subject to a restocking fee.

Restocking Fee: Returned merchandise will be subject to a restocking fee.

Non-Returnable Merchandise: All boards and furniture which have been custom sized, custom framed, or customized to specifications will be considered a non-returnable item.

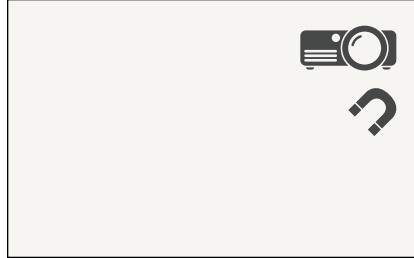
SURFACE MATERIALS:

WRITING SURFACE OPTIONS:



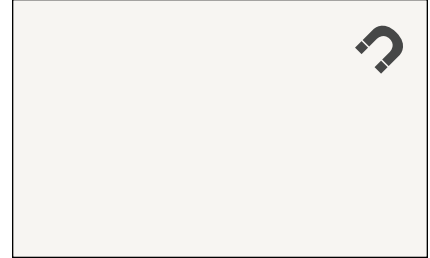
202-25 Porcelain Steel 1/2"

Standard gloss magnetic porcelain steel for superior writability and erasability. Precisely balanced enamel ground coat is furnace-fused to 28- or 24-ga steel. Mounted with a PVA adhesive onto a moisture-resistant substrate with .005" polyester foil backer for 1/2" panel thickness. Available with upgraded sheet aluminum backer (203).



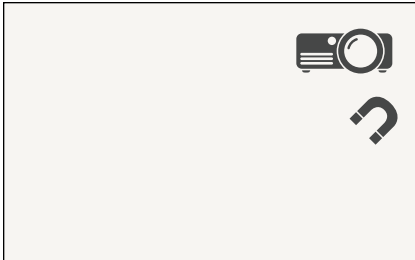
202-26* LG Porcelain Steel 1/2"

Low gloss projection magnetic porcelain steel for use **only** as projection surface. Precisely balanced enamel ground coat is furnace-fused to 28- or 24-ga steel. Mounted with a PVA adhesive onto a moisture-resistant substrate with .005" polyester foil backer for 1/2" panel thickness. Available with upgraded sheet aluminum backer (203).



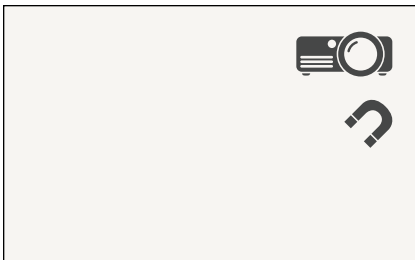
2H2-25 Porcelain Steel 1/4"

More economical and lighter weight standard gloss porcelain steel surface. Precisely balanced enamel ground coat is furnace-fused to 28- or 24-gauge steel. Mounted with a PVA adhesive onto a moisture-resistant substrate with .005" polyester foil backer for a 1/4" panel thickness. Available with upgraded sheet aluminum backer (2H3).



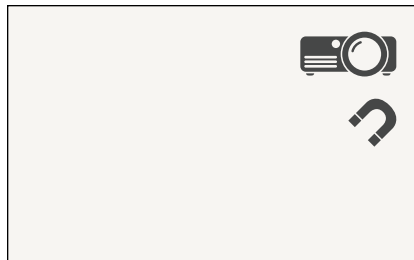
2H2-26* LG Porcelain Steel 1/4"

Low gloss projection magnetic porcelain steel for use **only** as projection surface. Precisely balanced enamel ground coat is furnace-fused to 28- or 24-ga steel. Mounted with a PVA adhesive onto a moisture-resistant substrate with .005" polyester foil backer for 1/4" panel thickness. Available with upgraded sheet aluminum backer (2H3).



2G5-25 IPB Standard White

Magnetic porcelain steel with a flatness guarantee engineered for use with interactive projectors. Precisely balanced enamel ground coat is furnace-fused to 28- or 24-gauge steel. Mounted with a PVA adhesive onto a moisture-resistant substrate to a galvanized steel backer for a 3/4" panel thickness.



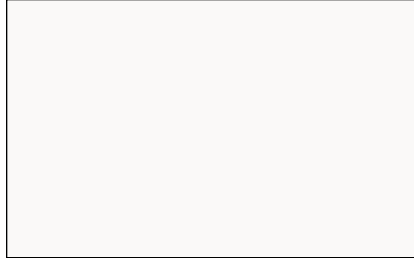
2G5-26* IPB Low Gloss White

Magnetic porcelain steel with a flatness guarantee engineered for use with interactive projectors. Low gloss white for use **only** as projection surface. Requires wet erasing. Enamel ground coat is furnace-fused to 28- or 24-gauge steel. Mounted with a PVA adhesive onto a moisture-resistant substrate to a galvanized steel backer for a 3/4" thick panel.



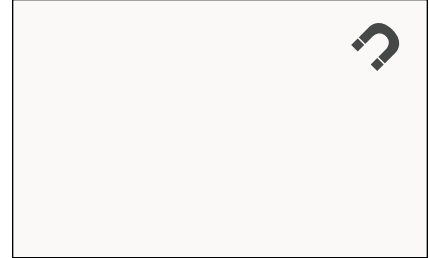
838XX Magnetic Glass

Durable tempered safety glass is permanently mounted to a galvanized steel backer, providing an ultra smooth, easy to clean writing surface that also accepts rare earth magnets. Various mounting options including stainless steel standoffs are available. Available in a variety of colors. Glossy surface is standard. Low iron white available.



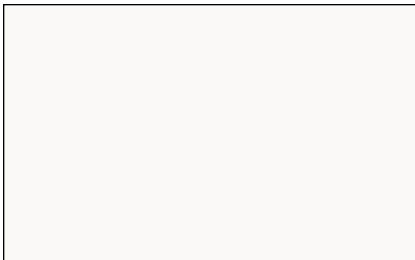
212 Dura-Rite®

High quality dust-free HPL dry erase surface with excellent writability and erasability. Resistant to wear, stains, high temperatures, common household chemical agents and detergents. Taber tests show Dura-Rite® can last up to 125 times as long as melamine boards. White HPL laminated to a moisture resistant substrate for a ¼" panel thickness.



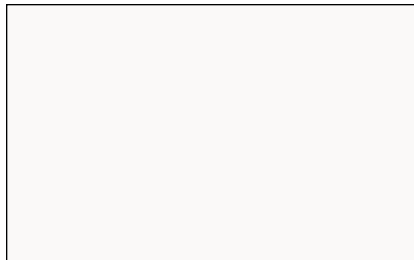
219 Magne-Rite

Magne-Rite is a specially engineered powder coated steel designed for dry erase applications. Glossy white surface provides superior writability and erasability with no ghosting. More economical than other magnetic dry erase surfaces, the steel sheet is permanently adhered to a moisture-resistant substrate for a ¼" panel thickness.



2H1 TuF-Rite™ ¼"

Reformulated TuF-Rite melamine provides a vast improvement over standard economy melamine surfaces. Thermal fuse technology improves erasability to minimize residual marker ghosting and lasts up to three times as long. White melamine is thermal fused to a lightweight substrate for rigidity for a total ¼" panel thickness.



221 TuF-Rite™ ½"

Reformulated TuF-Rite melamine provides a vast improvement over standard economy melamine surfaces. Thermal fuse technology improves erasability to minimize residual marker ghosting and lasts up to three times as long. White melamine is thermal fused to a durable substrate for rigidity for a total ½" panel thickness.

SURFACE MATERIALS:

TACKABLE SURFACE OPTIONS:



301 Valu-Tak Natural Cork

Valu-Tak natural cork surface provides good resiliency and tack-holding ability at an economical price point. The $\frac{3}{8}$ " thick cork layer consists of finely-grained composition cork made with granulated cork and a polyurethane binder. The cork is permanently bonded to a $\frac{3}{8}$ " thick lightweight substrate. Total $\frac{1}{2}$ " panel thickness.



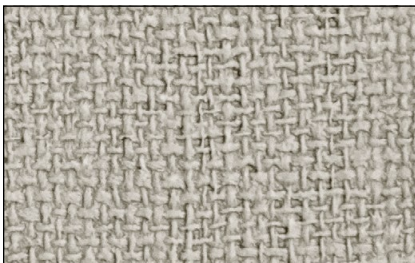
302 Natural Add-Cork

A step up from Valu-Tak, Natural Add-Cork provides excellent resiliency and tack-holding ability. The $\frac{1}{8}$ " thick natural cork layer consists of finely-grained composition cork made with granulated cork and a polyurethane binder. The cork is permanently bonded to a $\frac{3}{8}$ " thick lightweight substrate for a total $\frac{1}{2}$ " panel thickness.



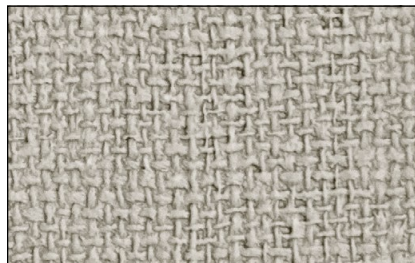
303 Natural Cork-Plate

Our premium cork surface, Natural Cork-Plate provides superior resiliency, durability and tack-holding ability. The $\frac{1}{4}$ " thick natural cork layer consists of finely-grained composition cork made with granulated cork and a polyurethane binder. The cork is permanently bonded to a $\frac{1}{4}$ " thick moisture-resistant substrate for a total $\frac{1}{2}$ " panel thickness.



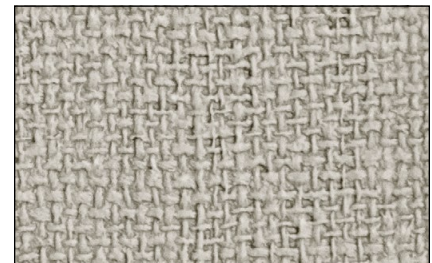
311 Vin-Tak

Economical Vin-Tak boards are made with a durable fabric-backed vinyl permanently adhered to a $\frac{3}{8}$ " thick lightweight substrate for good durability, resilience, and tack-holding ability. Total $\frac{1}{2}$ " panel thickness. The textured vinyl is easy to clean, and is treated to resist the growth of odor- and stain-causing microbes.



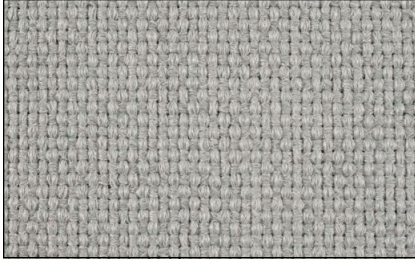
312 Vinyl Add-Cork

Vinyl Add-Cork features a layer of fabric-backed vinyl permanently adhered to Add-Cork: a $\frac{1}{8}$ " thick natural cork layer bonded to a $\frac{3}{8}$ " thick lightweight substrate for a total $\frac{1}{2}$ " panel thickness. Excellent durability, resilience, and tack-holding ability. Vinyl is easy to clean, and is treated to resist the growth of odor- and stain-causing microbes.



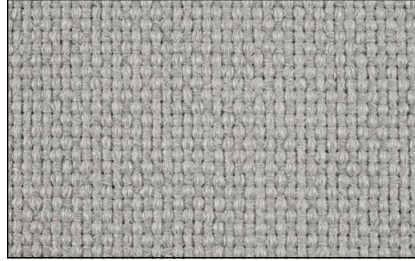
313 Vinyl Cork-Plate

Vinyl Cork-Plate features a layer of fabric-backed vinyl permanently adhered to Cork-Plate: a $\frac{1}{4}$ " thick natural cork layer bonded to a $\frac{1}{4}$ " thick moisture-resistant substrate for a total $\frac{1}{2}$ " panel thickness. Superior durability, resilience, and tack-holding ability. Vinyl is easy to clean, and is treated to resist the growth of odor- and stain-causing microbes.



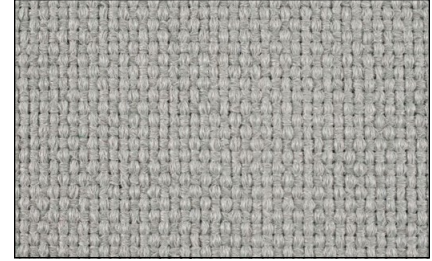
331 Fab-Tak

Economical Fab-Tak boards are made with woven 100% polypropylene. Non-fraying and abrasion-resistant fabric is treated to inhibit the growth of odor- and stain-causing microbes. Fabric is permanently adhered to a $\frac{7}{16}$ " lightweight substrate for good durability, resilience, and tack-holding properties. Total $\frac{1}{2}$ " panel thickness.



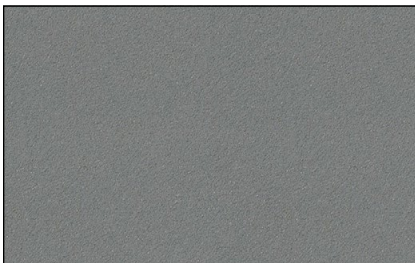
332 Fabric Add-Cork

Fabric Add-Cork features a layer of woven 100% polypropylene fabric permanently adhered to Add-Cork: a $\frac{1}{8}$ " thick natural cork layer bonded to a $\frac{3}{16}$ " thick lightweight substrate for a total $\frac{1}{2}$ " panel thickness. Excellent durability, resilience, and tack-holding properties. Treated to inhibit the growth of odor- and stain-causing microbes.



333 Fabric Cork-Plate

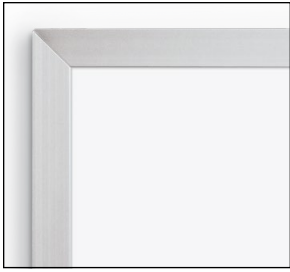
Fabric Add-Cork features a layer of woven 100% polypropylene fabric permanently adhered to Cork-Plate: a $\frac{1}{4}$ " thick natural cork layer bonded to a $\frac{1}{4}$ " thick lightweight substrate for a total $\frac{1}{2}$ " panel thickness. Excellent durability, resilience, and tack-holding properties. Treated to inhibit the growth of odor- and stain-causing microbes.



322 Colored Cork

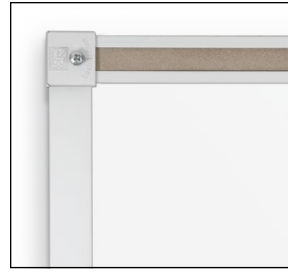
Colored Cork is made with Forbo® linoleum, a combination of oxidized linseed oil, rosin, and finely ground cork. Natural self-sanitizing quality inhibits contaminants. Surface is self-healing and colored throughout. Made with a $\frac{1}{4}$ " thick layer of linoleum permanently bonded to a $\frac{1}{4}$ " moisture-resistant substrate for a $\frac{1}{2}$ " panel thickness.

BOARD TRIMS:



A Standard Aluminum Trim

Frame any surface with our traditional standard aluminum trim. Straight units of aluminum alloy extrusion with a $\frac{3}{8}$ " profile are joined with hairline miters. Exposed aluminum trim and fasteners are etched and anodized with a satin finish in silver. Comes standard on tackable surfaces. Writing surfaces will include Deluxe Aluminum Trim unless otherwise specified.



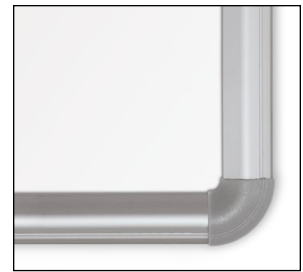
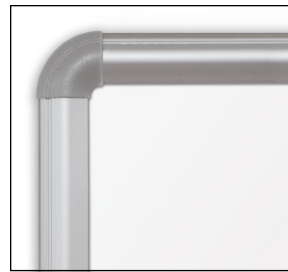
A Deluxe Aluminum Trim

Frame any writing surface with our traditional deluxe aluminum trim. Straight units of aluminum alloy extrusion with a $\frac{3}{8}$ " profile are joined with hairline miters. Exposed aluminum trim and fasteners are etched and clear anodized with a satin finish. Includes full-length 1" tack rail with enclosed end stops and a tackable insert. Standard blade tray is 2- $\frac{3}{8}$ " deep and features Dura-Safe® rubber end caps.



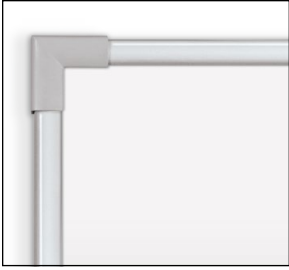
N ABC Trim

Frame any $\frac{1}{4}$ " writing surface with our economical ABC Trim. Straight units of aluminum alloy extrusion with a $\frac{3}{8}$ " profile are joined with hairline miters. Exposed aluminum trim and fasteners are etched and anodized with a satin finish. Top corners are protected with aluminum corner caps. The full length accessory tray is 2" deep (1" deep on boards 3'H x 4'W and smaller) and is finished in plastic end caps to eliminate sharp edges.



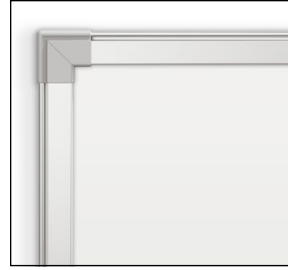
P Presidential Trim

Frame any surface with our stylish Presidential Trim. Extruded anodized aluminum lengths with a rounded 1" profile are joined with injection-molded curved plastic corner pieces. Exposed aluminum trim and fasteners are etched and anodized with a satin finish in silver. Writing surfaces will include magnetic accessory tray for markers and erasers.



9 Ultra Trim

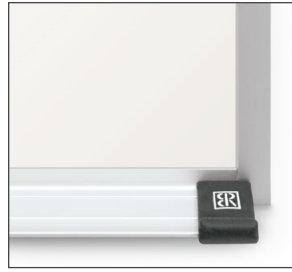
Frame any $\frac{1}{2}$ " surface with our modern and minimalist Ultra Trim. Extruded anodized aluminum lengths with a rounded, ultra slim $\frac{3}{8}$ " profile are joined with minimal plastic corner caps. Exposed aluminum trim and fasteners are etched and anodized with a satin finish in silver. Writing surfaces will include magnetic accessory tray for markers and erasers.



K Brio Trim

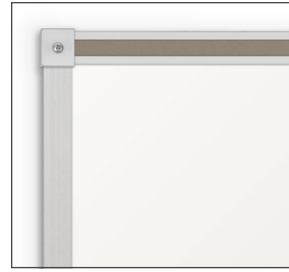
Brio is a specially engineered trim for our Interactive Projector Board series, designed to provide guaranteed board surface flatness for superior interactive projector accuracy. Straight lengths of aluminum alloy trim with a $\frac{3}{4}$ " profile are joined with matching plastic corner pieces. Exposed aluminum trim and fasteners are etched and anodized with a satin finish. Writing surfaces will include magnetic accessory tray for markers and erasers.

ARCHITECTURAL TRIMS:



A Architectural Trim Package "A"

Trim is constructed from straight lengths of aluminum alloy extrusion with a 7/8" profile joined with hairline miters. Exposed aluminum trim and fasteners are etched and anodized with a dull satin finish. Includes full-length 1" tack rail with enclosed end stops and a tackable insert. Includes full-length 2-3/4" deep blade accessory tray with Dura-Safe® rubber end caps. Same as Deluxe Aluminum.



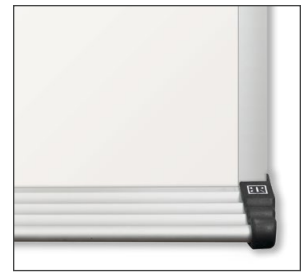
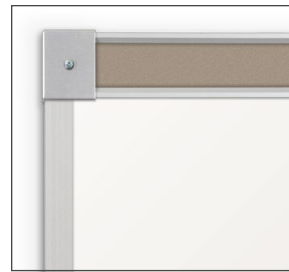
V Architectural Trim Package "V"

Trim is constructed from straight lengths of aluminum alloy extrusion with a 7/8" profile joined with hairline miters. Exposed aluminum trim and fasteners are etched and anodized with a dull satin finish. Includes full-length 1" tack rail with enclosed end stops and a tackable insert. Includes full-length enclosed box accessory tray with Dura-Safe® rubber end caps or aluminum tray ends.



Y Architectural Trim Package "Y"

Trim is constructed from straight lengths of aluminum alloy extrusion with a 7/8" profile joined with hairline miters. Exposed aluminum trim and fasteners are etched and anodized with a dull satin finish. Includes full-length 2" tack rail with enclosed end stops and a tackable insert. Includes full-length 2-3/4" deep blade accessory tray with Dura-Safe® rubber end caps.



Z Architectural Trim Package "Z"

Trim is constructed from straight lengths of aluminum alloy extrusion with a 7/8" profile joined with hairline miters. Exposed aluminum trim and fasteners are etched and anodized with a dull satin finish. Includes full-length 2" tack rail with enclosed end stops and a tackable insert. Includes full-length enclosed box accessory tray with Dura-Safe® rubber end caps or aluminum tray ends.



5 Architectural Trim Package "5"

Trim is constructed from straight lengths of aluminum alloy extrusion with a 1-1/8" profile joined with hairline miters. Exposed aluminum trim and fasteners are etched and anodized with a dull satin finish. Includes full-length 2" tack rail with enclosed end stops and a tackable insert. Includes full-length 2-3/4" deep blade accessory tray with Dura-Safe® rubber end caps.



6 Architectural Trim Package "6"

Trim is constructed from straight lengths of aluminum alloy extrusion with a 1-1/8" profile joined with hairline miters. Exposed aluminum trim and fasteners are etched and anodized with a dull satin finish. Includes full-length 2" tack rail with enclosed end stops and a tackable insert. Includes full-length enclosed box accessory tray with Dura-Safe® rubber end caps or aluminum tray ends.



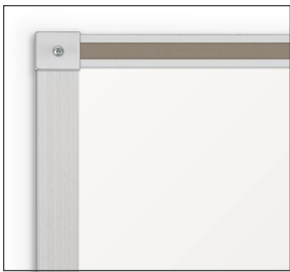
2 Architectural Trim Package "2"

Trim is constructed from straight lengths of aluminum alloy extrusion with a 1-1/2" profile joined with hairline miters. Exposed aluminum trim and fasteners are etched and anodized with a dull satin finish. Includes full-length 2" tack rail with enclosed end stops and a tackable insert. Includes full-length 2-3/8" deep blade accessory tray with Dura-Safe® rubber end caps.



1 Architectural Trim Package "1"

Trim is constructed from straight lengths of aluminum alloy extrusion with a 1-1/2" profile joined with hairline miters. Exposed aluminum trim and fasteners are etched and anodized with a dull satin finish. Includes full-length 2" tack rail with enclosed end stops and a tackable insert. Includes full-length enclosed box accessory tray with Dura-Safe® rubber end caps or aluminum tray ends.



4 Architectural Trim Package "4"

Trim is constructed from straight lengths of aluminum alloy extrusion with a 1-1/2" profile joined with hairline miters. Exposed aluminum trim and fasteners are etched and anodized with a dull satin finish. Includes full-length 1" tack rail with enclosed end stops and a tackable insert. Includes full-length 2-3/8" deep blade accessory tray with Dura-Safe® rubber end caps.

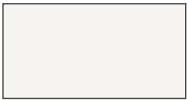
COLORS + FINISH OPTIONS:

Trim

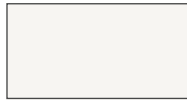


Aluminum
Silver

Porcelain Steel



Off White (25)



Low Gloss Off White
(26)*

Glass



White



Low Iron White



Custom Color**

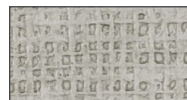
Standard Vinyl



Gray (44)



Pacific Blue (47)



Platinum (56)



Rockport (37)

Gray, Pacific Blue, and Platinum
Available While Supplies Last



Silver Fox
Replacing Gray and
Platinum



Breakwater
Replacing Pacific Blue

When current stock of colors above are
depleted, new colors will be made available
and substituted in for any older colors ordered.

Colored Cork



Ash (07)



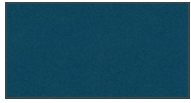
Buff (18)



Slate (19)



Stone (15)



Blueberry**



Cinnamon**



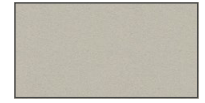
Lettuce**



Mushroom**



Onyx**



Oyster**



Pineapple**

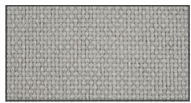


Salsa**



Tangerine**

Standard Fabric



Granite (36)



Indigo (35)



Nutmeg (33)



MooreCo Inc.
2885 Lorraine Avenue | Temple, TX 76501
p: 800.749.2258 | f: 866.888.7483
www.moorecoinc.com