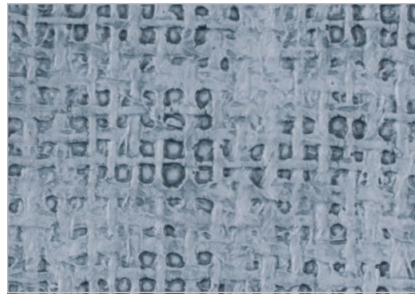


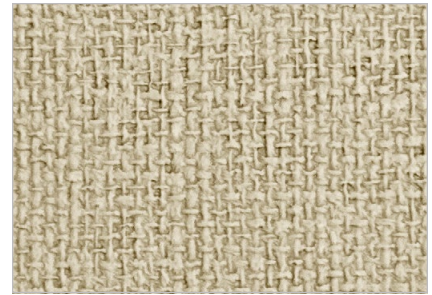
# Vinyl Tackboard Collection



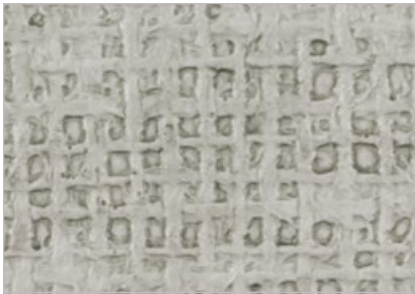
Gray  
**44**



Pacific Blue  
**47**



Rockport  
**37**



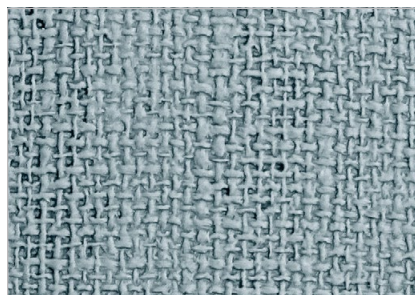
Platinum  
**56**

Gray, Platinum, and Pacific Blue available while supplies last.

When current stock of colors above are depleted, new colors will be made available and substituted in for any older colors ordered.



Silver Fox  
*Replacing Gray and Platinum*



Breakwater  
*Replacing Pacific Blue*

# Vinyl Technical Information

This vinyl wallcovering meets or exceeds all requirements of Federal Specifications CCC-W-408A Quality Standard for Vinyl Coated Fabric Wallcovering, CFFA-W-101A, and the Standard Classification of Wallcoverings by Durability Characteristics of ASTM-F-793-82 for the type and category classified including 24 hour cleanability tests based on ASTM method D1308.

Vinyl wallcovering shall be treated with an antimicrobial to resist the growth of mildew and bacteria, including *Staphylococcus aureus*, *Streptovercillium reticulum* (pink stain), and mixed fungal spore such as *Aspergillus niger*, *Aspergillus flavus*, *Penicillium funiculosum*, and *Chaetomium globosum*.

Custom vinyl fabrics can be applied to MooreCo boards if fabric is supplied. Call for details and upcharge information. Subject to approval.

Physical Properties	US Units
Total Weight	21 oz. Ply 10 oz. Ply
Fabric Weight	1.8 oz Ply 13.2 oz Ply
Roll Width	53/55" (.964") / 2.45 cm
Vinyl Gauge	1/40" (.025") / 7 mils
Fabric	Sheeting
Federal Spec	CCC-W-408A, Type I
CFFA Spec	CFFA-W-101-D, Type I
UL Rating	ASTM E-84 Tunnel Test
Fire Testing	NFPA 101®, Life Safety Code® NFPA 225 (UL 723, CAN S102M) Tunnel Test* Class A Rating NFPA 286 Corner Burn Test** Meets requirements for flame spread, smoke development, and flashover UL Listed and Labeled
Repeat	Vertical N/A Horizontal N/A
Match Information	Random Match Reverse Hang